

# *5th Annual Reindeer Derby*



*Dillingham Ranch*  
*December 11 & 12, 2021*

## *Welcoming:*

*Judging By:* Kim Stewart

*Course Design By:* Nick Karazissis

## *Special Thanks To ...*

*Show Secretary:* Andréa Stoebenau

*Show Manager:* Suzie Neufeldt

*English Lead Announcer:* Lynn Woodell

*Western Show Manager:* Dena Fitzgerald

*Western Show Scribe:* Holly Fernandez

*Western Show Announcer:* Kylie Hyatt

*On-site Course Designer:* Amy Quinlan

*Veterinarian On-Call:* Oahu Equine Veterinarian Clinic

## *Have you ever wondered about Santa's Reindeer?...*

| Reindeer | Personality Trait      | Skill                    |
|----------|------------------------|--------------------------|
| Dasher   | Loves to go fast       | Sewing                   |
| Dancer   | Completely extroverted | Dancing                  |
| Prancer  | Affectionate           | Prancing                 |
| Vixen    | Tricky                 | Magic                    |
| Comet    | Easy going             | Good with kids           |
| Cupid    | Affectionate           | Bringing people together |
| Donner   | Loud                   | Singing                  |
| Blitzen  | Fast                   | Uplifting                |
| Rudolph  | Down on himself        | Nose glows               |
| Olive    | Humble                 | Good at hide & go seek   |

*About the Judge*  
**KIM STEWART**

*Pleased to welcome Kim Stewart as our Reindeer Derby Judge!*



Kim has spent her lifetime working with horse and ponies, training hunters, jumpers and equitation horses and riders, along with several winning International Derby horses. Kim has served on the USEF Pony committee and the USHJA Green Hunter Task Force as well. Owner and operator of her own Glenwillow Inc, she travels up and down the East Coast and winters in Florida in Wellington for the circuit of WEF for horse shows and clinics.

*Education*

Trained as a junior with Wendy Carlson who was a Pan American Gold Medalist in Dressage and worked with jumper trainer Tony Font taking young horses and problem horses for flat work with Wendy and rode Tony's horses to prep and train for shows including traveling to Florida Circuit where I had opportunities to work with many great trainers.

*Accolades*

3 time Winner of leading trainer award-The Emerson Burr Trophy of the USEF Pony Finals with KnickerBocker and Julianne Befeler, Sham's Loganberry and Samantha Schaefer and Molly Sullivan with Time to Talk.

Trainer of Best Child Riders of Devon, Harrisburg, Capitol Challenge and WIHS many times with Julianne Befeler, Samantha Schaefer and Bernadette Chungunco

Trainer of many Horses and ponies to the Grand Championships of many shows including Devon, Capitol Challenge, Harrisburg and WIHS as well as many of the top shows in the country including Upperville and Middleburg Classic and the Hampton Classic. Some of the well known equines include Halcyon Hawthorn, Alexander's Frosted Blue, Almost Majic, Newsworthy, Northwind's Onyx and Storyteller are some of the ponies. Perfectionist, Lazy Sunday, Crush and Garfield are a few of the horses.

Trained junior jumpers and Grand Prix horses including Perle with Samantha Schaefer winning High Jr Classic at WEF and ribbons in Grand Prix. Also traveled to World Cup in Geneva with Ken Berkley and Carlos Boy for the US team among other great experiences in Europe.

Discovered Garfield as a 4 year old in Germany with 30 days of training and then developed him with Samantha Schaefer to Grand Champions at Devon, Harrisburg and many others in the large jr hunters as well as the Regular Confirmation Champion at Capitol Challenge. Garfield also was successful in International derbies including a first round win at Derby Finals in Ky. Garfield continued his winning ways with Scott Stewart and many Junior riders and just this year has retired at my Glenwillow Farm.

This year I trained my own import Crush to Champions at WEF in the Green Confirmation and adult division and also Hamilton to small jr champions at WEF as well as a National Derby win on the field out of 97 entries.

I have trained winners of the USEF Pony medal Finals and the WIHS pony equitation Finals and ribbon winners in the Medal and Maclay Finals and the winner of the WIHS Equitation Finals as well.

I live and manage my own Glenwillow Farm in Jefferson where I have been since the year 2000 where I have several horses in training as well as some rescue goats, steers and a cow. Glenwillow Farm is 200 plus acres and we also grow hay and other crops. I enjoy teaching and working with young horses most of all. I own several horses and ponies that are leased out around the country and when they are done with their work they retire at my farm.



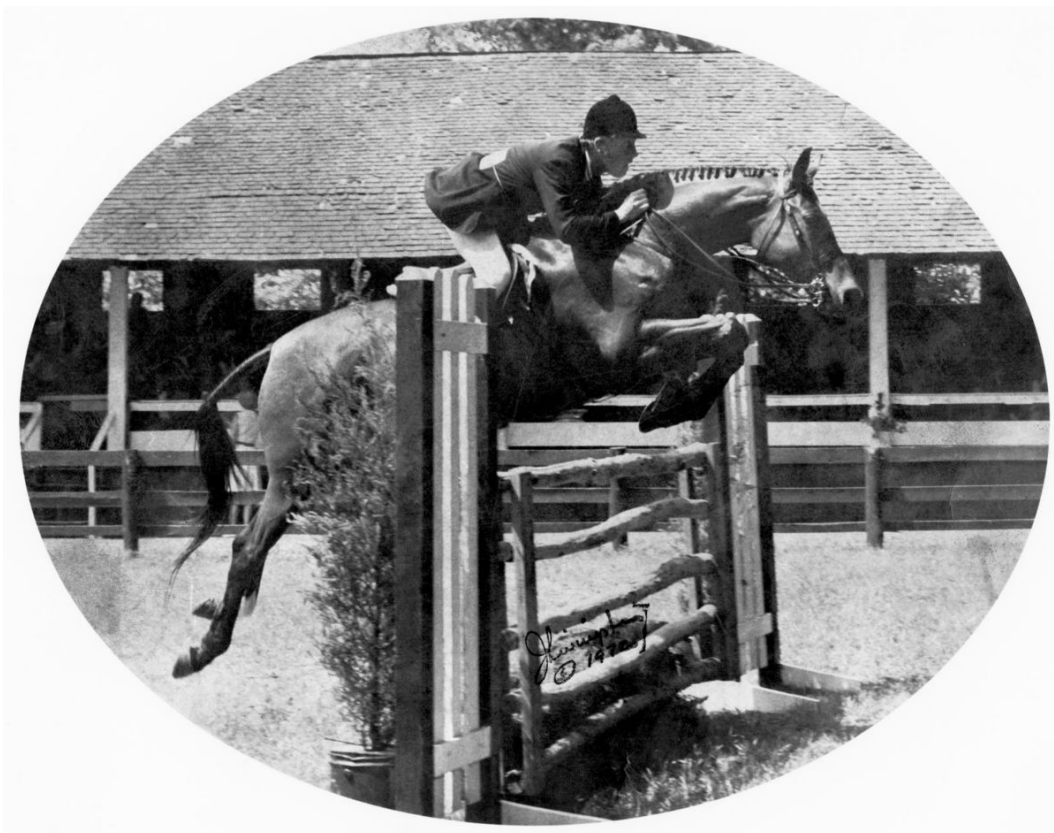
## *In Honor of Bucky Reynolds..*

This year's Reindeer Derby will include a derby class to recognize J. Arthur "Bucky" Reynolds II, a Hall of Fame horseman and long-time Warrenton resident. After a long illness, Bucky sadly passed away in 2017. Reynolds, 78, was selected for the National Show Hunter Hall of Fame earlier this year and honored at a ceremony at the Devon Horse Show near Philadelphia in May.

Bucky Reynolds officiated at every major horse show in the U.S. and had trained and ridden winners from New York City's Madison Square Garden to the winter equestrian mecca of Wellington, Florida, and hundreds of events in between. For more than five decades, he was a leading figure and frequent champion on the nation's hunter-jumper circuit.

Bucky humbly accepted our invitation to judge the first ever Reindeer Derby in December 2016. He was a class act and gave the competitors his absolute attention and care as he watched the Hawaii riders ride out their first hunter derby courses. It truly was a privilege to have had the opportunity to work with him and we are delighted to perpetuate his memory in the *Bucky Reynolds Memorial Cupid Derby Classic*.

"He was a top, top, top horseman," said long-time trainer Don Stewart, Jr. of Ocala, Florida. "He had world-class horses and he was a great rider. He was very disciplined in everything he did, and very easy to be around. A wonderful temperament".



# *The Hunter Derby*

Hunter derbies have a two round format. The first round is a Classic round, where the horse is judged on performance, pace, jumping style, quality and movement, and shows that he really enjoys his job. The second round is a Handy Hunter round, which encourages brilliance of pace (a more forward galloping stride) and handiness, which means riders opt for tighter turns and different tracks to fences than those traditionally taken in a hunter round. Judges use a numerical scoring system to rate the horses after each round of competition. One extra point is given for each high-option fence that is jumped. Interestingly, the point is awarded even if there is a refusal or a rail down, provided that the horse and rider get over the fence. This point is added to the low score garnered by the rail or the refusal.

In the derbies, judges are looking for, and rewarding handiness and boldness more than in a traditional hunter round. Judges want to see a horse that really enjoys his job. If you've never been to a hunter derby, you will find that it is quite different. Horses are encouraged to really open their stride and gallop to the fences, similar to what they would do in a hunt field.

Hunter derbies showcase what hunter horses are capable of in terms of athleticism and scope. These classes test both horses and riders with unique fences not seen in regular hunter classes that typically have traditional walls, verticals and oxers.

Hunter derbies, no matter the height, are reminiscent of the hunt field and designed to bring show hunters back to their roots. Obstacles can include post-and-rail fences, stone walls, white-board fences or gates, coops, aikens (fences with both brush and timber), hedges, brush, logs or natural foliage. Banks and ditches can also make an appearance in the derby.

## *Saddle Up...*

For a fun and challenging new take on hunter competition, come on out to beautiful Dillingham Ranch on Oahu's North Shore to give a hunter derby a try.

Designed to encourage a rider to think on course and ride a forward horse, derbies are a wonderful change from traditional hunter rounds of outside line- diagonal, outside line- diagonal classes and counting strides. *Who knows— you might even discover your horse was destined to be a derby horse!*

## *General Rules and Information*

**Age:** Rider's age as of January 1, 2021 will be used.

**Attire:** Breeches or jodhpurs and SEI approved hard hats must be worn in all classes; breeches and formal hunt coat. SEI - approved hard hats with harnesses required for all riders. This rule will be strictly enforced.

\*Tasteful "Reindeer" or holiday decorations may be added to horses. However, please be advised the Show Steward reserves the right to ask that horse decorations be removed if they are too distracting to the other horses. Sample decorations may include simple garland, tinsel, glitter, ribbon, etc (no large bells, capes, streamers, this is a hunter derby!).

**Awards:** Ribbons 1st to 6th place will be awarded in all classes; large classes maybe pinned through 10th place. Open & adult sections will be pinned 1st to 3rd for the derby rounds. Derby & Medal classes, riders will be asked to pick up their ribbons from the secretary/ribbon booth after checking the score board.

**Cancellation of Classes:** The show committee reserves the right to cancel any class with fewer than 3 entries.

**Warm-up:** Arena & grass derby field will be open for flat schooling until 4pm on Friday, December 10, 2021. Jumps in the arena will be open for schooling from 12pm-3pm on Friday, December 10, 2021. Jumps on the grass derby field will not be open for schooling. After 4pm on Friday, the arena & grass will be closed. The sand arena & derby field will be open for flat riding on Saturday morning from 6am-7am. Arena will close for riding & open to walk the course from 7am-7:35am. The sand arena & derby field will be open for flat riding on Sunday morning from 6:30am-7:30am. Arena will close for riding & open to walk the course from 7:30am-8am.

**Course Diagrams:** All course diagrams will be posted at least one hour prior to the start of the horse show.

**Entries:** Use a separate entry form for each horse/rider combination. Entrants must complete the Open, Junior or Amateur section on their entry. All entries must be made in writing, signed by horse's owner or authorized agent and accompanied by all applicable entry fees & waivers. Entries postmarked on or before November 20, 2021 may apply early bird discount of 10%. Entries postmarked on or after December 3, 2021 will incur post entry fees.

**Entry Fees:** SEE ENTRY FORM. A \$50 office/ venue fee for all entries. A \$25.00 service charge will be imposed if a check is returned by the bank. \*This fee does not apply to Games only entrants.

**Post Entries:** Exhibitors submitting an entry blank before the closing date may post-enter other hunter/equitation classes at the regular fee plus \$5.00, if the same horse/rider combination are listed on the original entry. All others may post-enter at the regular fee, plus \$10.00. Post-entries must be complete (with all required signatures and fees) prior to the first call for that class. In classes requiring individual work, post entries may be placed first in the starting order

**Refunds:** After close of entries, refunds (less \$50.00 office/ venue fee) will be mailed only upon certification of unsoundness by veterinarian or, in the case of personal illness, by a physician and received within seven (7) days after the show.

**Stabling:** Overnight stabling is available for December 10, 2021-December 12, 2021. Portable stabling will be set up for stabling and a very limited number of grass paddocks may be available.

Complete and return stabling request BY NOVEMBER 20, 2021. Stabling checks payable to: Na Lio Kai Pony Club. Mail to Suzie Neufeldt 3558A Woodlawn Drive Honolulu Hawaii 96822.

## *Class List*

**Arena Open For walking 7am-7:35am; WU-1 7:45-8:30am;  
Judge's Meeting 8:45am; Class 1 will begin following the Judge's Meeting**

| <i>Saturday December 11, 2021</i> |  |                                 |
|-----------------------------------|--|---------------------------------|
| Class                             | Class Description                                    | Fence Height                    |
| WU-1                              | Warm-Up Derby  | 2'9" ,with 3'0 Options          |
| 1                                 | Dancer Derby   | 2'9" , with 3'0" Options        |
| 2                                 | Vixen Derby  | 3'0" , with 3'3" Options        |
| 3                                 | Bucky Reynolds Memorial Cupid Derby<br>Classic*      | 3'3" , with 3'6" & 3'9" Options |
| 4                                 | Hunter Under Saddle                                  |                                 |
| 5                                 | Christmas Pleasure Horse                             |                                 |
| 6                                 | Sleigh Ride Handy Hunter Under Saddle \$100<br>Stake |                                 |
| WU-2                              | Warm-Up Derby  | 2'6" , with 2'9" Options        |
| 7                                 | Prancer Derby  | 2'6" , with 2'9" Options        |
| 8                                 | Hunt Pairs Hunter Challenge \$100 Stake              | 2'6"                            |
| 9                                 | Hunt Pairs under saddle                              |                                 |
| 10                                | Leadline   |                                 |
| WU-3                              | Warm-Up Derby  | 2'3" , with 2'6" Options        |
| 11                                | Comet Derby  | 2'3" , with 2'6" Options        |
| WU-4                              | Warm-Up Derby  | 2'0" , with 2'3" Options        |
| 12                                | Dasher Derby   | 2'0" , with 2'3" Options        |
| WU-5                              | Rudolph WU w/ trainer                                | 18" ,with 2' Options            |
| 13                                | Rudolph Derby X-Rails                                | 18" ,with 2' Options            |
| 14                                | Rudolph Under Saddle                                 |                                 |
| 15                                | 10 & Under Flat Equitation                           |                                 |
| 16                                | Walk/Trot Equitation                                 |                                 |
| 17                                | Holly Hilltoppers walk & trot                        |                                 |
| 18                                | Holly Hilltoppers walk, trot, canter                 |                                 |
| 19                                | Snowflake Hunt Trail Team                            | 1'0" Options                    |
| 20                                | Sit-A-Buck   |                                 |

\* Subject To Change



**Arena open for course walk 7:30-8:00am**  
**WU-6 starts at 8:00am**

| <i>Sunday December 12, 2021</i> |  |                             |
|---------------------------------|--|-----------------------------|
| Class                           | Class Description                      | Fence Height                |
| WU-6                            | Warm-Up                                | 2'9"                        |
| 21                              | Tinsel Medal                           | 2'9" , with USEF tests 1-19 |
| 22                              | Candy Cane Medal                       | 3'0" , with USEF tests 1-19 |
| 23                              | 14-17 Equitation                       |                             |
| 24                              | 11-13 Equitation                       |                             |
| 25                              | 18 & over Equitation                   |                             |
| WU-7                            | Warm-Up                                | 2'6"                        |
| 26                              | Elf Medal                              | 2'6" , with USEF tests 1-9  |
| WU-8                            | Warm-Up                                | 2'0"                        |
| 27                              | Jingle Bell Medal                      | 2'0"                        |
| 28                              | Mr. & Mrs. Claus's Hunt Trail Team     | 1'0" options                |
|                                 | BREAK                                  |                             |
| 29                              | Stock seat Equitation youth 17 & under |                             |
| 30                              | Stock seat Equitation Adult Amateur    |                             |
| 31                              | Mistletoe Western Pleasure Youth       |                             |
| 32                              | Mistletoe Western Pleasure Open        |                             |
| 33                              | Ranch Riding youth                     |                             |
| 34                              | Ranch Riding Adult Amateur             |                             |
| 35                              | Ranch Riding Open                      |                             |
| 36                              | Reining pattern Open \$100 Stake       |                             |

**Estimated Class start times will be emailed after Early bird deadline and updated accordingly.**

# Class Descriptions

## SATURDAY

**Warm-Up Classes:** This is a 5-7 fence single round format. Warm-up course will be posted. The WARM-UP CLASSES are open to all horses/ponies as an opportunity to school over the show jumps. These classes are NOT judged and are open to all riders; hunt coats are optional. WU-1: 2'9"- 3'0"; WU-2: 2'6"- 2'9"; WU-3: 2'3"- 2'6"; WU-4: 2'0"- 2'3"; WU-5: 18"- 2'0"; WU-6: 2'9"; WU-7: 2'6"; WU-8: 2'0". \*Riders in WU-5 have the option to have their trainer in the arena during their round.

**DANCER, VIXEN and PRANCER Derbies (Classes 1,2,7):** This is a two-round format utilizing the open numerical system to score competitors in the Classic Hunter Round (first round) on performance, hunter pace, jumping style, quality and substance, and movement. In addition, the base score in the Handy Hunter Round (second round) reflects brilliance of pace and handiness. In each round, after the Judge's base score is given, one point will be added for each high-option fence jumped up to a maximum of four high option fences. The point must be added even if there is a refusal, rail down, or a loss of good jumping style at that fence, providing that the horse-and-rider combination does jump the higher height fence option. Obstacles are reminiscent of the hunt field and offer a variety of appearances- such as natural post and rail, stone wall, white board fence or gate, coop, aiken, hedge, oxer, brush, logs and/or natural foliage. The Handy Hunter Round should simulate riding over hunt country and incorporates options such as tight turns, clever options for jump approaches, hand galloping, trotting a fence, and crossing a bridge.

**SCORING:** \*The Judge will determine the base score for the Classic Round, 1 point for each high option fence will be added to the base score. Horses scoring 60 or above in the first round are eligible for the Handy Round.

\*The Judge will determine the score for the handy round. With 1 point added for each high option fences, as well as handy points awarded for handiness throughout the course for a Total Handy Score. Total Handy Score will be added to the Classic Score for the *Total Final Score* to determine placings in each derby.

**COMET, DASHER and RUDOLPH DERBIES (Classes 11,12,13):** These derbies will be held held over a single-round course of 10 fences: Comet- 2'3" in height, with two option fences set at 2'6"; Dasher- 2'0" in height, with two option fences set at 2'3"; Rudolph- 18" in height, with two option fences set at 2'0". Simple changes of lead will not be penalized. Obstacles are reminiscent of the hunt field and should offer a variety of appearances, such as natural post and rail, stone wall, white board fence or gate, coop, aiken, hedge, oxer, brush, logs and natural foliage. The course will consist of Hunter Classic and Hunter Handy style lines, turns and jumps and include hand galloping and/or trotting a fence. The Judge will use the open numerical scoring system. After the Judge's score is given, 1 point will be added for each high option fence jumped.

### Fence heights for the Reindeer Derbies:

| <u>CLASS #</u> | <u>FENCE HEIGHT</u>   |
|----------------|---|
| 1              | 2'9" with 4 high option fences set at 3'0"                                    |
| 2              | 3'0" with 4 high option fences set at 3'3"                                    |
| 3              | 3'3" with 2 high option fences set at 3'6" & 2 high option fences set at 3'9" |
| 7              | 2'6" with 4 high option fences set at 2'9"                                    |
| 11             | 2'3" with 2 high option fences set at 2'6"                                    |
| 12             | 2'0" with 2 high option fences set at 2'3"                                    |
| 13             | 18" with 2 high options set at 2'0" **  |

\*Riders may cross enter between derbies with different fence heights, but for junior and amateur riders who enter in multiple derbies, the derby with lower fence heights will be judged and pinned in the Open section.

\*\* Horse and rider combinations entered in class# 3, the Bucky Reynolds Memorial Cupid Hunter Derby Classic, may be judged in an Under Saddle phase, as well as the Classic and Handy Hunter rounds.

\*\* For Class #13 ONLY, fences may be taken at the trot or canter. Except for refusals, jumping faults of the horse will not be considered unless they are the fault of the rider.

\*\*\* Simple changes of lead will NOT be penalized for derbies with fence heights 2'3" and below.

\*\* JUNIORS, ADULTS, & OPEN SECTIONS WILL BE JUDGED & PINNED SEPARATELY FOR EACH DERBY CLASS, EXCLUDING CLASS #3, The Bucky Reynolds Memorial Cupid Derby Classic will be open to Juniors, Amateurs & Open riders. All sections (Pro, Open & Am) judged collectively. See below for class description.

**\*Bucky Reynolds Memorial Cupid Derby Classic:** This hunter derby will include a Hack, Classic, and a Handy round. To be judged as other derbies, though high option fences in the Handy round will be worth 2 points each high-option fence jumped, with up to a maximum of four high option fences. Points from all three phases will be totaled to determine class placings. A perpetual award in honor of "Bucky" will be awarded to the winning horse. Open to Juniors, Adult Amateurs, and Professional riders. Judged and pinned collectively. If fewer than 2 riders are entered, only the Classic round will be held.

**HUNT PAIRS HUNTER CHALLENGE \$100 STAKE:** *RIDERS ENTER INDIVIDUALLY ON ENTRY FORM.* Open to horses and ponies. To be ridden over a derby style course in tandem except for the last fence, which shall be taken abreast. At the end of each round, the Judge asks the pair a question pertaining to the Hunter Division. Performance, way of going as a team (75%); quality, substance, soundness and resemblance as a team (15%); correctly answered question (10%). Prize money split to each member of winning pair, and ribbons to each pair member through 6th place. **Minimum of 3 pairs for stake money to be paid out.**

**Open Hunter Under Saddle:** Open to all riders, horses, and ponies. To be judged at the walk, trot, and canter both ways of the ring. Horses should be obedient, alert, responsive and move freely. They should not be eliminated for slight errors. Horses may be asked to hand gallop collectively one way of the ring. No more than eight horses will be asked to gallop at one time.

**Christmas Pleasure Horse:** Open to all riders, horses and ponies. To be judged at the walk, trot and canter both ways of the ring. There is an emphasis on manners and ability to afford a pleasurable ride.

**Sleigh Ride Handy Hunter Under Saddle \$100 Stake:** Open to all riders, horses, and ponies. To be judged at the walk, trot, and canter both ways of the ring. Horses should be obedient, alert, responsive and move freely. They should not be eliminated for slight errors. Horses may be asked to hand gallop collectively, walk on a loose rein, back up and halt both ways of the ring. No more than eight horses will be asked to gallop at one time. Horses will work off until top placings are chosen.

**Leadline:** Open to beginner riders. Horses to be lead at the walk and trot in both directions. No cross entry with any other classes is allowed. Office/Venue fee not applicable.

**10 & Under Equitation:** To be judged at the walk, trot and canter both ways of the ring. Additional USEF/ USHJA tests may be requested at the Judge's discretion.

**Walk Trot Equitation:** Open to novice riders who have NOT won more than 5 blue ribbons at a show. To be judged at the walk and trot both ways of the arena. Class will be judged on the riders' effectiveness and position on the flat. Cross entry with classes 15,17,18,19, 20 ONLY.

**Rudolph Hunter Under Saddle:** Open to horse & rider combinations who competed in the Rudolph Derby. To be judged at the walk, trot, and canter both ways of the ring. Horses should be obedient, alert, responsive and move freely. They should not be eliminated for slight errors.

**Holly Hilltoppers walk, trot:** Open to young riders (12 & under) who are not entered in any jumping derbies, although they may cross enter into the Snowflake Hunt Trail, and have limited, if any, experience showing. Judged on performance, manners, way of going and suitability of mount to rider. Riders will be asked to walk, trot, each direction.

**Holly Hilltoppers walk, trot, canter:** Open to riders who are not entered in any jumping derbies, although they may cross enter into the Snowflake Hunt Trail or Mr. & Mrs. Claus's Hunt Trail, and have limited, if any, experience competing over fences. Judged on performance, manners, way of going and suitability of mount to rider. Riders will be asked to walk, trot, and canter each direction. (May be divided into adult & youth age sections).

**Snowflake Hunt Trail Team:** Open to all horse and junior riders (Under 18), from any discipline (Polo, Western, Dressage & Hunt tack). TEAMS OF 2-3 RIDERS will be tested over a trail course which may include riding over terrain at the walk, trot and/or canter crossing a bridge, checking a mailbox, option to jump a straw bale, a low jump or step over a log. Class will be judged on control and riders' effectiveness and position on the flat (65%) and ability to complete hunt trail course (35%).

**Sit-a-Buck:** Competitors enter the arena with a dollar bill under each calf. Riders follow the Judge's instructions. Riders not following the Judge's instructions are eliminated. Riders losing both of their dollars are eliminated. The last remaining rider with at least one dollar held by their calf wins all the money. Office/ Venue fee not applicable.

## SUNDAY

**Tinsel Medal:** Open to Junior and Adult Amateur riders. Conducted like the USEF Hunter Seat Equitation Medal. USEF Tests 1-19 may be asked, fence height 2'9". Riders may be asked to work off. Riders may not cross enter into any other Medal class.

**Candy Cane Medal:** Open to Junior and Adult Amateur riders. Conducted like the USEF Hunter Seat Equitation Medal. USEF Tests 1-19 may be asked, fence height 3'0". Riders may be asked to work off. Riders may not cross enter into any other Medal class.

**Elf Medal:** Open to Junior and Adult Amateur riders. Conducted like the USEF Hunter Seat Equitation Medal. USEF Tests 1-9 may be asked, fence height 2'6". Riders may be asked to work off. Riders may not cross enter into any other Medal class.

**Jingle Bell Medal:** Open to Junior and Adult Amateur riders. Fence height 2'0". Conducted like the USEF Hunter Seat Equitation Medal. Riders may not cross enter into any other Medal class. Simple changes of lead will not be penalized.

**11-13, 14-17 & Adult Equitation:** To be judged at the walk, trot and canter both ways of the ring. Additional USEF/ USHJA tests may be requested at the Judge's discretion.

**Mr. & Mrs. Claus's Hunt Trail Team:** Open to all horse & adult riders (18 & over), from any discipline (Polo, Western, Dressage & Hunt tack). TEAMS of 2-4 RIDERS will be tested over a trail course which may include riding over terrain at the walk, trot and/or canter, crossing a bridge, checking a mailbox, option to jump a straw bale, a low jump or step over a log. Class will be judged on control, riders' effectiveness and position on the flat (65%) and ability to complete hunt trail course (35%).

## WESTERN

**Stock Seat Equitation Youth 17 & Under:** Open to riders 17 and under. Riders are judged collectively at the walk, jog and lope both directions on the arena. Riders are judged on horsemanship, style, balance and ability, and effectiveness at applying aids.

**Stock Seat Equitation Adult Amateur:** Open to riders 18 and over. Riders are judged collectively at the walk, jog and lope both directions on the arena. Riders are judged on horsemanship, style, balance and ability, and effectiveness at applying aids.

**Mistletoe Western Pleasure Youth :** Open to riders 17 & under. Judged at a walk, jog-trot and lope both ways of the ring on a reasonably loose rein without undue restraint. To be judged on performance, conformation, appointments.

**Mistletoe Western Pleasure Open :** Judged at a walk, jog-trot and lope both ways of the ring on a reasonably loose rein without undue restraint. To be judged on performance, conformation, appointments.

**Ranch Riding (Youth, Adult Amateur, Open) :** Judged on the horses' ability to work at a forward, working speed while performing required and optional maneuvers over a posted Ranch Riding pattern. The ranch riding horse should simulate a horse riding outside the confines of an arena and reflect the versatility, attitude and movement of a working horse. REFER TO AQHA PATTERN # 6

**Reining Pattern Open:** Each horse is evaluated on movement, mastery of the pattern and attitude. REFER TO AQHA PATTERN # 2

## *Reindeer Derby Special Awards*

- \* **Bucky Reynolds Memorial Award-** A perpetual trophy awarded to the highest scoring horse over the three phases in the in the Bucky Reynolds Memorial Cupid Derby Classic.
- \* **Frank Madden Excellence In Equitation Award-** A perpetual equitation trophy will be awarded to the high point equitation rider. Riders may be asked to work off on the flat and tested.
- \* **Horse Play Encouraged Award-** Awarded to the high point junior and adult rider for both days of the Reindeer Derby combined.
- \* **Ride of the Day-** Awarded to the hunter derby horse and rider with the highest combined classic and handy round score of the day.
- \* **Western High Point Youth-** Awarded to the youth high point Western division rider 17 & Under.
- \* **Western Spectacular-** Awarded to the high point Western division rider.

## *Be A Sponsor!*

Show your support ... would you like to sponsor a derby?  
We are welcoming sponsors for ALL classes offered at the Reindeer Derby.  
Sponsor options are listed below...

| <b>SPONSOR OPTIONS</b>               | <b>DONATION</b> |
|--------------------------------------|-----------------|
| Reindeer Derby Sponsorship           | \$55            |
| Equitation Medal Sponsorship         | \$55            |
| Equitation on the Flat Sponsorship   | \$30            |
| Christmas Pleasure Horse Sponsorship | \$20            |
| Mr. & Mrs. Claus's Sponsorship       | \$20            |
| Leadline Sponsorship                 | \$20            |
| Games Sponsorship                    | \$10            |
| Western Division Sponsorship         | \$100           |
| Western Class Sponsorship            | \$25            |

## *Other Ways To Support*

Any gift to The Reindeer Derby 2021 makes a difference. We are grateful for community support and involvement as spectators, volunteers, sponsors and vendors.  
Let's get together and create an Equestrian Event at the close of 2021...

### **The 5th Annual North Shore Reindeer Derby!**

This event is being made possible by volunteers who share their time and individuals who provide financial assistance through generous donations. We are so grateful!

# Entry Form- Reindeer Derby 2021

RIDER'S NAME: \_\_\_\_\_

HORSE'S NAME: \_\_\_\_\_

CLASS #s entered: \_\_\_\_\_, \_\_\_\_\_, \_\_\_\_\_, \_\_\_\_\_, \_\_\_\_\_, \_\_\_\_\_, \_\_\_\_\_, \_\_\_\_\_, \_\_\_\_\_, \_\_\_\_\_, \_\_\_\_\_, \_\_\_\_\_, \_\_\_\_\_

HUNT PAIR CHALLENGE \$100 STAKE Team Member \_\_\_\_\_

HUNT TRAIL TEAMMATES: \_\_\_\_\_, \_\_\_\_\_, \_\_\_\_\_, \_\_\_\_\_

|    | WARM-UP  | 1 (2'9") | 2 (2'6")  | 3 (2'3")   | 4 (2'0") | 5 (18") | \$20            |
|----|--|----------|-----------|------------|----------|---------|-----------------|
| 1  | DANCER DERBY                                       | (O) OPEN | (A) ADULT | (J) JUNIOR |          |         | \$55            |
| 2  | VIXEN DERBY  | (O) OPEN | (A) ADULT | (J) JUNIOR |          |         | \$55            |
| 3  | CUPID DERBY CLASSIC                                |          |           |            |          |         | \$65            |
| 4  | HUNTER UNDER SADDLE                                |          |           |            |          |         | \$25            |
| 5  | CHRISTMAS PLEASURE HORSE                           |          |           |            |          |         | \$25            |
| 6  | Sleigh Ride Handy Hunter<br>Undersadle \$100 Stake |          |           |            |          |         | \$25            |
| 7  | PRANCER DERBY                                      | (O) OPEN | (A) ADULT | (J) JUNIOR |          |         | \$55            |
| 8  | HUNT PAIRS \$100 STAKE                             |          |           |            |          |         | \$35 each rider |
| 9  | HUNT PAIRS UNDER SADDLE                            |          |           |            |          |         | \$25            |
| 10 | LEADLINE   |          |           |            |          |         | \$5             |
| 11 | COMET DERBY  | (O) OPEN | (A) ADULT | (J) JUNIOR |          |         | \$55            |
| 12 | DASHER DERBY                                       |          |           |            |          |         | \$55            |
| 13 | RUDOLPH DERBY                                      | (O) OPEN | (A) ADULT | (J) JUNIOR |          |         | \$45            |
| 14 | RUDOLPH UNDER SADDLE                               |          |           |            |          |         | \$25            |
| 15 | 10 & UNDER Flat Equitation                         |          |           |            |          |         | \$25            |
| 16 | Walk Trot Equitation                               |          |           |            |          |         | \$25            |
| 17 | HOLLY HILLTOPPERS W-T                              |          |           |            |          |         | \$20            |
| 18 | HOLLY HILLTOPPERS W-T-C                            |          |           |            |          |         | \$20            |
| 19 | Snowflake Hunt Trail Team                          |          |           |            |          |         | \$15            |
| 20 | SIT-A -BUCK  |          |           |            |          |         | \$1             |
|    | WARM-UP  | 6 (2'9") | 7 (2'6")  | 8 (2'0")   |          |         | \$20            |

|    |   |                |                     |            |  |  |      |
|----|---|----------------|---------------------|------------|--|--|------|
| 21 | TINSEL MEDAL  |                | (A) ADULT           | (J) JUNIOR |  |  | \$55 |
| 22 | CANDY CANE MEDAL  |                | (A) ADULT           | (J) JUNIOR |  |  | \$55 |
| 23 | 14-17 FLAT EQ   |                |                     |            |  |  | \$25 |
| 24 | 11-13 FLAT EQ   |                |                     |            |  |  | \$25 |
| 25 | 18 & over FLAT EQ   |                |                     |            |  |  | \$25 |
| 26 | ELF MEDAL   |                | (A) ADULT           | (J) JUNIOR |  |  | \$55 |
| 27 | JINGLE BELL MEDAL   |                | (A) ADULT           | (J) JUNIOR |  |  | \$55 |
| 28 | Mr. & Mrs. Claus's Hunt Trail Team  |                |                     |            |  |  | \$15 |
| 29 | Stockseat Equitation youth  |                |                     |            |  |  | \$20 |
| 30 | Stockseat Equitation adult  |                |                     |            |  |  | \$20 |
| 31 | Mistletoe Western Pleasure Y  |                |                     |            |  |  | \$20 |
| 32 | Mistletoe Western Pleasure O  |                |                     |            |  |  | \$20 |
| 33 | Ranch Riding youth  |                |                     |            |  |  | \$20 |
| 34 | Ranch Riding Adult  |                |                     |            |  |  | \$20 |
| 35 | Ranch Riding Open   |                |                     |            |  |  | \$20 |
| 36 | Reining Pattern Open \$100 stake  |                |                     |            |  |  | \$20 |
|    | CLASS TOTAL   |                |                     |            |  |  |      |
|    | OFFICE/ VENUE FEE   |                |                     |            |  |  | \$50 |
|    | <b>POST ENTRY</b><br>Applied when registering on or after<br><b>Dec. 3</b> ; Does not apply to Games. | \$10/<br>class | (X # of<br>classes) |            |  |  |      |
|    | TOTAL   |                |                     |            |  |  |      |
|    | Early Bird Discount if entry is<br>received by <b>Nov. 20, 2021</b>                                   | -10%           |                     |            |  |  |      |
|    | DONATION  |                |                     |            |  |  |      |
|    | Premier Parking Pass (Optional)<br>For parking section A , see below.                                 |                |                     |            |  |  | \$5  |
|    | TOTAL   |                |                     |            |  |  |      |

\*NOTE: Office/Venue fee applicable 1 time/rider  
PLEASE MAKES CHECKS PAYABLE TO: **THE REINDEER DERBY**  
MAIL TO:  
**ANDRÉA STOEBENAU**  
**1509 HALEKOA DRIVE**  
**HONOLULU, HI 96821**  
[astoeb@gmail.com](mailto:astoeb@gmail.com). 808-372-7893



I hereby relinquish all claims against Dillingham Ranch, The Reindeer Derby, Amy Quinlan, Amy Quinlan Equestrian, their management and employees, and show management, for injury to rider, loss, damage to horses or equipment or liabilities of any character. I agree to abide by rules set forth by this horse show committee.

### *Rider Info:*

Name: \_\_\_\_\_

Age: \_\_\_\_\_ Birthdate (If minor): \_\_\_\_\_

Address: \_\_\_\_\_

Phone: \_\_\_\_\_

Signature: \_\_\_\_\_

Parent/Guardian \_\_\_\_\_

Signature (If Under 18) \_\_\_\_\_

**Trainer's Signature:** \_\_\_\_\_

### *Horse Owner Info:*

Name: \_\_\_\_\_

Address: \_\_\_\_\_

Phone: \_\_\_\_\_

Signature: \_\_\_\_\_

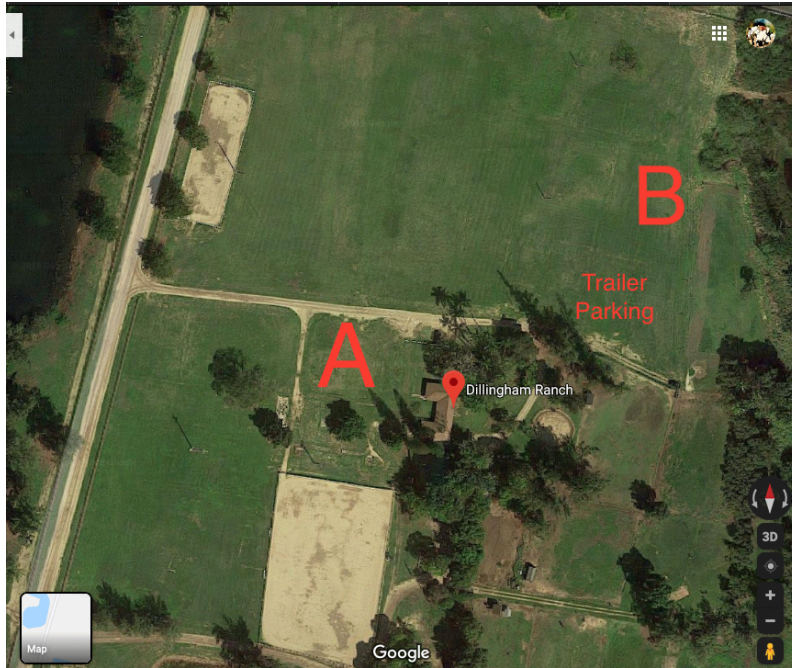
Name of HORSE: \_\_\_\_\_

age \_\_\_\_\_

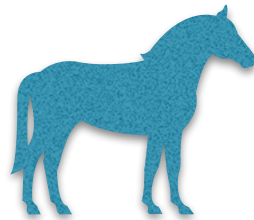
height \_\_\_\_\_

sex \_\_\_\_\_

## *Reindeer Derby Parking*



Premier on-site parking in parking section A is available for purchase for \$5 which includes both days of the Reindeer Derby. If you choose to purchase a parking pass, please print this pass and bring it to the secretary booth for validation to display on your dash board on the days of the event. Additional free on-site parking in parking section B will be available for all spectators and competitors. See map above.



# *Reindeer Derby Premier Parking Pass*

License No: \_\_\_\_\_

Permission to Use Photograph Subject: Reindeer Derby 2021

Location: Dillingham Ranch, 68-540 Farrington Hwy Waiialua, HI 96791

I grant to The Reindeer Derby, its representatives and employees the right to take photographs of me and my property in connection with the above-identified subject. I authorize The Reindeer Derby, its assigns and transferees to copyright, use and publish the same in print and/or electronically.

I agree that The Reindeer Derby may use such photographs of me with or without my name and for any lawful purpose, including for example such purposes as publicity, illustration, advertising, and Web content.

I have read and understand the above:

Signature \_\_\_\_\_

Printed name \_\_\_\_\_

Organization Name (if applicable) \_\_\_\_\_

Address \_\_\_\_\_

Date \_\_\_\_\_

Signature, parent or guardian \_\_\_\_\_ (if under age 18)

# **THE REINDEER DERBY GENERAL ACTIVITY RELEASE, ASSUMPTION OF RISK, WAIVER OF LIABILITY, AND INDEMNITY AGREEMENT**

*This document waives important legal rights. Read it carefully before signing.*

I **AGREE** for myself, and/or my child, my/our administrators and assigns, in consideration for my, and/or my child's, participation in this The Reindeer Derby and The Reindeer Derby activity to the following:

I **AGREE** that I choose to participate voluntarily in The Reindeer Derby and activity, as a rider, driver, handler, lessee, owner, agent, spectator, volunteer, and/or trainer. I am fully aware and acknowledge that horse sports and The Reindeer Derby activities involve inherent dangerous risks of accident, loss, and serious bodily injury including, but not limited to, broken bones, head injuries, trauma, pain, suffering or death ("Harm"). I fully understand that this release covers, but is not limited to, inherent risks of an equine activity which mean a danger or condition that is an integral part of an equine activity, including but not limited to, any of the following:

- The propensity of an equine to behave in ways that may result in injury, death, or loss to persons on or around the equine;
- The unpredictability of an equine's reaction to sounds, sudden movement, unfamiliar objects, persons, or other animals;
- Hazards, including, but not limited to, surface or subsurface conditions;
- A collision with another equine, another animal, a person, or an object;
- The potential of an equine activity participant to act in a negligent manner that may contribute to injury, death, or loss to the person of the participant or to other persons, including but not limited to, failing to maintain control over an equine or failing to act within the ability of the participant.

I **AGREE** to release the The Reindeer Derby, its successors or assigns, officials, officers, directors, employees, agents, personnel, volunteers and affiliated organizations from all claims including, but not limited to, claims for money or property, disability, covenants, actions, suits, causes or action, obligations, debts, costs, expenses, attorneys' fees, judgments, orders and liabilities of whatsoever kind or nature in law, equity or otherwise, whether now known or unknown, suspected or unsuspected, and whether concealed or hidden, including but not limited to any state or federal statutory or common law claim or remedy of any kind whatsoever arising out of or in any way connected with any Harm to me or my horse and for any Harm caused by me or my horse to others, even if the Harm resulted, directly or indirectly, from the negligence of the The Reindeer Derby or the The Reindeer Derby activity.

I **AGREE** to expressly assume all risks of Harm to me or my horse, including Harm resulting from the negligence of the The Reindeer Derby or the The Reindeer Derby activity, and **specifically agree to the applicable state statute/law regarding equine/farm animal activity liability and signed posting (if any), in any state in which I or my child participates in a The Reindeer Derby activity. A true copy for all state statutes in effect at the time of the execution of this agreement is attached hereto and incorporated herein by reference as if set out fully in the text of this document.**

I **AGREE** to indemnify (that is, to pay any losses, damages, or costs incurred by) the The Reindeer Derby and the The Reindeer Derby activity and to hold them harmless with respect to claims for Harm to me or my horse, and for claims made by others for any Harm caused by me or my horse in the The Reindeer Derby. The Reindeer Derby shall promptly notify you in writing of any claim or action brought against The Reindeer Derby or any of its local clubs or affiliated organization in respect of which indemnity may be sought against you, setting forth the particulars of such claim or action and you will assume the defense thereof, including the employment of counsel satisfactory to The Reindeer Derby and the payment of all expenses.

I **AGREE** that neither I, nor any one claiming through me, will hereafter bring, commence, prosecute or maintain, or cause or permit to be brought, commenced, prosecuted or maintained, any suit or action, either at law or in equity, in any court in the United States or in any state thereof, or elsewhere, against the The Reindeer Derby, its successors or assigns, for, on account of, arising out of, or in any way connected with any Harm to me or my horse, and that neither I, nor any one claiming through me, will enforce, prosecute, or recover upon, or attempt to enforce, prosecute, or recover upon, any claim or right of action whatsoever, which I, or any one claiming through me, may now have or hereafter assert, in any way connected with claims for Harm to me or my horse, and for claims made by others for any Harms caused by me or my horse at the The Reindeer Derby activity.

I **AGREE** this Agreement is the entire agreement of the parties, and supersedes all prior oral and written understandings and agreements. This Agreement may be modified only by a written amendment signed by both parties.

I **AGREE** that if any provision of the Agreement is found to be invalid or illegal by a court of competent jurisdiction, the remaining provisions shall be construed as if the affected provision had not been included in order to effectuate the intent of the parties.

**In the event this form is signed by the parent/guardian of a child, then all representations and acknowledgements herein are expressly made by, for, and on behalf of the parent/guardian and child.**

By signing below, I **AGREE** to be bound by all applicable The Reindeer Derby rules and all terms and provisions of the The Reindeer Derby activity. I acknowledge that I enter into this release after having read the same, and place my signature hereto of my own free voluntary act and deed. By signing below, I represent to the The Reindeer Derby that I fully understand its contents, that I do not need any further explanation, and I waive any further explanation.

***REQUIRED— Original Signatures Required.***

\_\_\_\_\_ and  
\_\_\_\_\_

**Original Signature of Participant Date Original Signature of Parent(s) or Legal  
Guardian(s) Date**

*Unless participant is over the age of majority, i.e., dependent*



**COMPLETE RELEASE OF ALL LIABILITY, WAIVER  
AND AGREEMENT TO HOLD HARMLESS AND INDEMNIFY**

I understand that the purpose of this Complete Release of All Liability, Waiver and Agreement to Hold Harmless and indemnify (the "Agreement") is to give all persons and entities connected with the Dillingham Ranch Aina, LLC property located at 68-540 Farrington Highway, Waialua, Hawaii 96791 ("Dillingham Ranch") a complete release of any legal responsibility and liability to me and my children for any harm, injury, loss or damage we may suffer at Dillingham Ranch. By signing the Agreement, I intend to, and do hereby, give a complete release for any negligence, gross negligence, carelessness, recklessness and other fault of Kennedy Wilson International its officers, directors, employees and agents (collectively "Owner"), and all persons connected with Dillingham Ranch. By signing the Agreement, I have made a conscious decision for myself and my minor children to assume sole and absolute responsibility for any and all risk of injury and even death to me and/or my minor children in order to enter and be upon Dillingham Ranch, and to use or make use of any equipment, structure and livestock thereon. As used herein, the terms "I", "me", "myself" and "my" shall include myself and my minor children.

I HEREBY EXPRESSLY ASSUME ANY AND ALL RISK OF HARM, INJURY, LOSS AND DAMAGE TO MYSELF AND MY MINOR CHILDREN ASSOCIATED WITH OUR PRESENCE UPON AND USE OF DILLINGHAM RANCH. I FULLY UNDERSTAND ACKNOWLEDGE THAT DILLINGHAM RANCH IS A WORKING CATTLE RANCH AND CAN BE A DANGEROUS PLACE. I UNDERSTAND THAT THE RANCH PROPERTY ITSELF MAY BE DANGEROUS AND THAT STRUCTURES AND EQUIPMENT ON THE PROPERTY MAY BE DANGEROUS. I FURTHER UNDERSTAND THAT MANY ACTIVITIES AT DILLINGHAM RANCH MAY ALSO BE DANGEROUS AND THAT THE INFORMATION, INSTRUCTIONS AND EQUIPMENT PROVIDED TO ME AT DILLINGHAM RANCH MIGHT ALSO BE DEFECTIVE AND DANGEROUS.

Specifically, I understand, acknowledge, recognize and accept the fact that my presence on the Dillingham Ranch and my activities while there (the "Activities") may be dangerous and unattended by anyone. I further understand, acknowledge, recognize and accept that there are various and sundry risks associated with all activities at Dillingham Ranch. Such risk include, without limitation, the following: horses and other domestic animals can be unpredictable and may kick, buck, fall, bite, rear up, etc.; trails may become slippery and/or obstructed; outdoor exposure may cause sunburn, sunstroke, heat exhaustion, heatstroke, etc; there may be falling rocks/boulders, rockslides, mudslides, flash floods or other dangerous conditions; wild or feral animals may be encountered and can be dangerous and unpredictable; hunting firearms can be accidentally discharged; other recreational users may pose separate risks or danger. Possible injuries covered by this Agreement, without limitation, include bodily abrasions, contusions, broken bones, neck and back injuries, spinal injuries, head injuries, blindness, paralysis, loss or impairment of arms and legs, death and all other injuries.

WITH THIS KNOWLEDGE, UNDERSTANDING AND INTENT AND IN CONSIDERATION OF BEING ALLOWED ON THE DILLINGHAM RANCH, I DO, FOR MYSELF, MY MINOR CHILDREN AND FOR MY SUCCESSORS, ASSIGNS, REPRESENTATIVES, ADMINISTRATORS, INSURERS, OFFICERS, DIRECTORS, SHAREHOLDERS, PARTNERS, AFFILIATES, AGENTS, EMPLOYEES, CONTRACTORS, GUESTS, INVITEES, LICENSEES AND ATTORNEYS AND ANY OTHER PARTY CLAIMING BY, THROUGH OR UNDER ME (HEREINAFTER COLLECTIVELY CALLED "MY AFFILIATES"), DO HEREBY FULLY AND FINALLY FOREVER RELEASE, HOLD HARMLESS, WAIVE CLAIMS AGAINST, ACQUIT AND FOREVER DISCHARGE PROPERTY MANAGER, OWNER AND ALL OF THEIR RESPECTIVE SUCCESSORS, ASSIGNS, REPRESENTATIVES, ADMINISTRATORS, INSURERS, OFFICERS, DIRECTORS, SHAREHOLDERS, PARTNER, AFFILIATES, AGENTS, EMPLOYEES, CONTRACTORS AND ATTORNEYS (HEREIN AFTER COLLECTIVELY CALLED THE "DILLINGHAM AFFILIATES") FROM AND AGAINST ANY AND ALL LOSS LIABILITY EXPENSE, CLAIM OR DEMAND FOR ANY DAMAGE OR INJURY WHICH I, MY MINOR CHILDREN AND/OR MY AFFILIATES NOT HAVE, HAVE EVER HAD OR MY HAVE, WETHER KNOWN OR UNKNOWN AS OF THE DATE HEREOF, AGAINST PROPERTY MANAGER, OWNER AND THE DILLINGHAM AFFILIATES RESULTING FROM OR ARISING OUT OF OR IN CONNECTION WITH, DIRECTLY OR IN DIRECTLY, MY PRESENCE THE ACTIVITIES AND/OR THOSE OF ANY OTHER PARTY CLAIMING BY, THROUGH OR UNDER ME, ON OR ABOUT THE DILLINGHAM RANCH AND THE PROPERTY.

In consideration of being allowed entrance upon the Dillingham Ranch and the use of the property, grounds, equipment, structures and livestock, I agree to and so hereby indemnify, defend and hold Property Manager, Owner and Dillingham Affiliates completely and fully harmless from and against any and all claims or demands for loss, expense or damage, including, without limitation, property damage, business interruption, economic loss and personal injury and death, arising out of or in connection with, directly or indirectly, my Activities and/or those of any other party claiming by, through or under me, on or about the Dillingham Ranch. I further agree to and do hereby also indemnify, defend and hold Property Manager, Owner and the Dillingham Affiliates completely and fully harmless from and against any and all loss, liabilities, costs, damages and expenses, including, without limitation, all attorney's fees and costs incurred by Property Manager, Owner and the Dillingham Affiliates, arising out of or in connection with any claims, actions or demands, threatened or actual, against Property Manager, Owner and the Dillingham Affiliates relating to, directly or in directly, my presence, the Activities and/or those of any other party claiming by, through or under me, on or about the Dillingham Ranch.

I ACKNOWLEDGE AND AGREE THAT PROPERTY MANAGER, OWNER AND THE DILLINGHAM AFFILIATES SHALL NOT BE LIABLE OT RESPONSIBLE IN ANY WAY FOR BELONGING TO ME OR MY AFFILIATES. NEITHER SHALL PROPERTY MANAGER NOR OWNER NOR THE DILLINGHAM AFFILIATES BE LIABLE FOR DAMAGES FOR INJURIES OR DEATH SUFFERED BY ME, MY MINOR CHILDREN OR MY AFFILIATES WHILE PARTICIPATING IN THE ACTIVITIES OR WHILE ON OR ABOUT THE DILLINGHAM RANCH. I ALSO ACKNOWLEDGE AND AGREE THAT I HAVE BEEN ADVISED THAT HAWAII REVISED STATUES CHAPTER 520 LIMITS LANDOWNER LIABILITY TOWARD PERSONS ENTERING PRIVATE PROPERTY FOR RECREATIONAL PURPOSES.

Rider name \_\_\_\_\_  
Rider or Parent/Guardian (if rider is under 18) signature \_\_\_\_\_  
Date \_\_\_\_\_



# *Come for the weekend!! ...*

Stabling Application Form for Dillingham Ranch  
To make a reservation, complete this form and send it directly to:

**Suzie Neufeldt**  
**3558A Woodlawn Drive**  
**Honolulu Hawaii**  
**96822**

Checks Payable to: **NA LIO KAI PONY CLUB**

Overnight Stabling: \$25/ day

Food, bedding and containers will not be provided

Payment is due with your reservation payable to Na Lio Kai Pony Club.

Stabling will be confirmed on a first come first serve basis and received by  
November 20, 2021.

Please indicate the days you are planning to stay:

\_\_\_\_\_

## Emergency Information

Owner/ Handler Name: \_\_\_\_\_

Phone/Cellular: \_\_\_\_\_

Address: \_\_\_\_\_

Horse: \_\_\_\_\_ Veterinarian: \_\_\_\_\_

In case of an emergency contact name/phone): \_\_\_\_\_

In the event of an emergency, if I or my emergency contact cannot be reached, I authorize Amy Quinlan to contact my Veterinarian.

I hereby relinquish all claims against Dillingham Ranch, Amy Quinlan, their management and employees, and show management, for injury to rider, loss, damage to horses or equipment or liabilities of any character. I agree to abide by rules set forth by this horse show committee.

Signature: \_\_\_\_\_ Date: \_\_\_\_\_

# Operation Toy Box

*Proud to present, the Reindeer Derby's partnership with the North Shore News & Hawaii Polo, Once a Month Church, & North Shore Food Bank to Help make a child's Christmas special.*

Please bring new, unwrapped toys and gifts for the homeless and disadvantaged keiki and teens of Hawaii. Toy drop off will be at the show secretary booth on both days of the Reindeer Derby.

