

4th Annual Reindeer Derby

December 7 & 8, 2019

Dillingham Ranch, North Shore, Oahu

Judge: MR. JOHN FRENCH "R"



Please mail Entries to :

MICHELLE COLTE

95-1027 Kahakiki Street Mililani, Hawaii 96789

Welcoming:

Judging By: John French “R”, Templeton, CA

Course Design By: Frank Madden & Amanda Tallman

Special Thanks To ...

Show Steward: Sally White & Jamie Brewer

Judge Steward: Baiba Serroca

Show Manager: Jennifer Littenburg & Lynnne Woodell

On-site Course Designer: Amy Quinlan

Show Secretary: Michelle Colte

Veterinarian On-Call: Oahu Equine Veterinarian Clinic

Ring Crew Leader: Ian Colte

Have you ever wondered about Santa's Reindeer? ...

Reindeer	Personality Trait	Skill
Dasher	Loves to go fast	Sewing
Dancer	Completely extroverted	Dancing
Prancer	Affectionate	Prancing
Vixen	Tricky	Magic
Comet	Easy going	Good with kids
Cupid	Affectionate	Bringing people together
Donner	Loud	Singing
Blitzen	Fast	uplifting
Rudolph	Down on himself	Nose glows
Olive	Humble	Good at hide & go seek

About the Judge
JOHN FRENCH



Pleased to welcome John French as our Reindeer Derby Judge!

In addition to being a licensed “R” judge, John is widely recognized as one of the most accomplished hunter riders in the sport, John French has piloted countless horses to stardom in the hunter ring on both the East and West Coasts. Truly one of the sport’s most natural talents, French has achieved high performance success in both the hunter and jumper disciplines. From representing the United States in Nations Cups and competing at the FEI World Cup™ Finals over a decade ago, French was also the winner of the inaugural \$100,000 ASG Software Solutions/USHJA International Hunter Derby Finals aboard Rumba.

French won the WCHR Lifetime Achievement Award in 2012 and currently holds the title of World Champion Hunter Rider, a title he has won four times. In 2016 French was also awarded the West Region USHJA Hunter Derby Rider of the Year, and the CPHA Pre-Green Incentive Rider of the Year.

In 2017, French transitioned from running a full-service show barn to buying and selling, training and competing a select group of horses at home and on the road. As always, horse shows will

continue to be a priority, where he continues to be a sought after catch rider, coach and clinician.

JOHN FRENCH CAREER HIGHLIGHTS

- As a junior winner of the Maryland Equitation Finals and Reserve Champion Virginia Equitation Finals.
- 1987 - Grand Champion Green Hunter on Double Big
- 1999 - Rookie Grand Prix Rider of the Year for the Pacific Coast Horse Show Association as well as Leading Hunter Rider PCHA (several times)
- 2000 - Professional World Champion Hunter Rider
- 2003 - Rode in the World Cup Finals in Las Vegas also rode for the US Team at such shows as Falsterbo Sweden, Royan France, Cummen Belgium and rode for the US in Spain.
- 2004 - Rode with the US Team at Kickstead England and Dublin Ireland
- 2006 - Again Professional World Champion Hunter Rider, Winner Zone X Equestrian Athlete of the Year, Champion Washington on Vida Blue and Overseas Awarded the Emerson Burr Award for achievements in the Hunter ring Show Hunter Hall of Fame Hunter Rider of the Year
- 2007 - Champion at Devon aboard Scout and Andiamo Leading Hunter Rider Washington International Reserve Champion Professional World Champion Hunter Finals
- 2008 - Rode the Horse of the Year in the First Year Green Hunter Pringle Rode the Horse of the Year in the 2nd Year Green Hunter Wesley Reserve Champion World Hunter Rider Finals Pringle was also awarded Show Hunter Hall of Game Hunter of the Year
- 2009 - Winner of both \$10,000 Hunter Derby classes aboard Rumba at Thermal, CA
- 2009 - Winner of USHJA Hunter Derby riding Rumba in Lexington, KY



In Honor of Bucky Reynolds..

This years Reindeer Derby will include a Derby class to recognize J. Arthur “Bucky” Reynolds II, a Hall of Fame horseman and long-time Warrenton resident. After a long illness Bucky sadly passed away in 2017. Reynolds, 78, was selected for the National Show Hunter Hall of Fame earlier this year and honored at a ceremony at the Devon Horse Show near Philadelphia in May.

Bucky Reynolds officiated at every major horse show in the U.S. and had trained and ridden winners from New York City's Madison Square Garden to the winter equestrian mecca of Wellington, Florida, and hundreds of events in between. For more than five decades, he was a leading figure and frequent champion on the nation's hunter-jumper circuit.

Bucky humbly accepted our invitation to judge the first ever Reindeer Derby in December 2016. He was a class act and gave the competitors his absolute attention and care as he watched the Hawaii riders ride out their first hunter derby courses. It truly was a privilege to have had the opportunity to work with him and we are delighted to perpetuate his memory in the *Bucky Reynolds Memorial Cupid Derby Classic*.

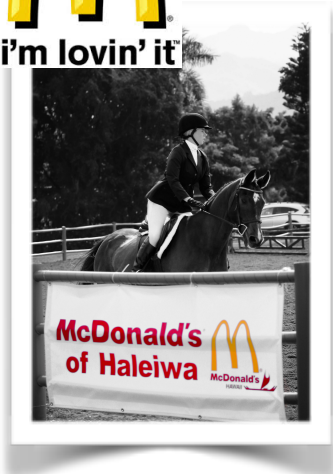
“He was a top, top, top horseman,” said long-time trainer Don Stewart, Jr. of Ocala, Florida. “He had world-class horses and he was a great rider. He was very disciplined in everything he did, and very easy to be around. A wonderful temperament”.



Thank you to our generous sponsors.....



i'm lovin' it



THE EQUUS 



TUCKER TWEED
EQUESTRIAN™

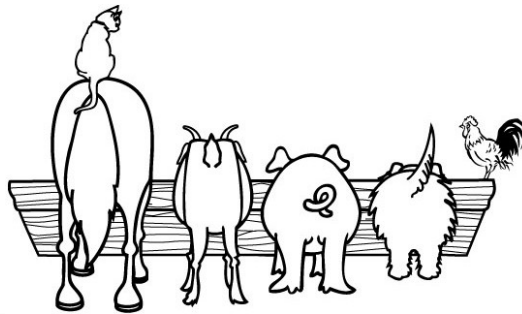


KASTEL
DENMARK
Feel the Difference

UP & RIDING



SoHa
LIVING



THE FEED TROUGH



WAIALUA ESTATE
Coffee and Chocolate



... & Many More!

The Hunter Derby

Hunter Derbies have a two round format. The first round is a Classic round, where the horse is judged on performance, pace, jumping style, quality and movement, and shows that he really enjoys his job. The second round is a Handy Hunter round, which encourages brilliance of pace (a more forward galloping stride) and handiness, which means riders opt for tighter turns and different tracks to fences than those traditionally taken in a hunter round. Judges use a numerical scoring system to rate the horses after each round of competition. One extra point is given for each high-option fence that is jumped. Interestingly, the point is awarded even if there is a refusal or a rail down, provided that the horse and rider get over the fence. This point is added to the low score garnered by the rail or the refusal.

In the derbies, judges are looking for, and rewarding handiness and boldness more than in a traditional hunter round. Judges want to see a horse that really enjoys his job. If you've never been to a hunter derby, you will find that it is quite different. Horses are encouraged to really open their stride and gallop to the fences, similar to what they would do in a hunt field.

Hunter derbies showcase what hunter horses are capable of in terms of athleticism and scope. These classes test both horses and riders with unique fences not seen in regular hunter classes that typically have traditional walls, verticals and oxers.

Hunter derbies, no matter their height, are reminiscent of the hunt field and designed to bring show hunters back to their roots. Obstacles can include post-and-rail fences, stone walls, white-board fences or gates, coops, aikens (fences with both brush and timber), hedges, brush, logs or natural foliage. Banks and ditches can also make an appearance in the derby.

Saddle Up...

For a fun and challenging new take on hunter competition, come on out to beautiful Dillingham ranch on Oahu's North Shore to give a hunter derby a try.

Designed to encourage a rider to think on course and ride a forward horse, derbies are a wonderful change from traditional hunter rounds of outside line- diagonal, outside line- diagonal classes and counting strides. *Who knows— you might even discover your horse was destined to be a derby horse!*

General Rules and Information

Age: Rider's age as of January 1, 2019 will be used.

Attire: Breeches or jodhpurs and SEI approved hard hats must be worn in all classes; Breeches and formal hunt coat. SEI - approved hard hats with harnesses required for all riders. This rule will be strictly enforced.

*Tasteful "Reindeer" or holiday decorations can be added to horses. But please be advised show Steward reserves the right to ask for horse decorations be removed if they are too distracting to the other horses. Sample decorations can include simple garland, tinsel, glitter, ribbon, etc (no large bells, capes, streamers, this is a Hunter Derby!).

Awards: Ribbons 1st to 6th place will be awarded in all classes, large classes maybe pinned through 10th place. Open & adult sections will be pinned 1st to 3rd for the derby rounds. Derby & Medal classes, riders will be asked to pick up their ribbons from the secretary/ ribbon booth after checking score board.

Cancellation of Classes: The show committee reserves the right to cancel any class with fewer than 3 entries.

Warm up: Arena & grass Derby Field will be open for flat schooling all day on Friday December 6, 2019. Jumps in the arena & on the grass will be open for schooling from 12pm - 5pm on Friday December 6, 2019. After 5pm on Friday, the arena & grass will be closed. The sand arena & derby field will be open for flat riding on Saturday morning from 6:45-7:20 am. Arena will close for riding & open to walk the course from 8:20-8:40 am.

Course Diagrams: All course diagrams will be posted at least one hour prior to the start of the horse show.

Entries: Use a separate entry form for each horse/rider combination. Entries must complete the Open, Junior, Amateur section on their entry. All entries must be made in writing, signed by horse's owner or authorized agent and accompanied by all applicable entry fees & waivers. Entries postmarked on or prior to November 16, 2019 may apply early bird discount of 10%. Entries received on or after December 6, 2019 will incur post entry fees.

Entry Fees: SEE ENTRY FORM . A \$50 office/ venue fee for all entries. A \$25.00 service charge will be imposed if a check is returned by the bank.

Post Entries: Exhibitors submitting an entry blank before the closing date may post-enter other hunter/equitation classes at the regular fee plus \$5.00, and the same horse and rider are listed as on the original entry. All others may post-enter at the regular fee plus \$10.00. Post-entries must be complete (with all required signatures and fees) prior to the first call for that class. In classes requiring individual work, post entries may be placed first in the starting order

Refunds: After close of entries, refunds (less \$50.00 office/ venue fee) will be mailed only upon certification of unsoundness by veterinarian or, in the case of personal illness, by a physician and received within seven (7) days after the show.

Food: A food booth will be available on the horse show grounds.

Stabling: Overnight stabling is available for 11/30-12/3 \$65. Portable stabling will be set up for stabling, very limited number of grass paddocks may be available.

Complete and return stabling request BY NOVEMBER 16, 2019. Stabling checks payable to Amy Quinlan, Po Box 806 Waiialua, Hawaii, 96791. Limited day stalls may be available, requests for day stalls will be placed on a wait list & filled once all overnight stabling requests are filled.

Class List

**Arena Open For walking 8:20-8:40 am, Riders Meeting 8:40 am
WU 1 Starts at 9:00 am**

<i>Saturday December 7, 2019</i>		
Class	Class Description	Fence Height
WU 1	Warm Up Derby	2'9" ,with 3'0 Options
1	Dancer Derby	2'9" , with 3'0" Options
2	Vixen Derby	3'0" , with 3'3" Options
3	Bucky Reynolds Memorial Cupid Derby Classic*	3'3" , with 3'6" & 3'9" Options
4	Sleigh Ride Undersaddle	
5	Christmas Pleasure Horse	
WU 2	Warm Up Derby	2'6" , with 2'9" Options
6	Prancer Derby	2'6" , with 2'9" Options
WU 3a	Warm Up Derby	2'3" , with 2'6" Options
7	Comet Derby	2'3" , with 2'6" Options
8	Hunt Pairs Hunter Challenge \$100 Stake	2'6"
9	Leadline	(During course change, on grass)
WU 3b	RUDOLPH WU w trainer	18" ,with 2' Options
10	Rudolph Derby, X - Rails	18" ,with 2' Options
11	10 & Under Flat Equitation	
12	Walk/ Trot Equitation	
13	Holly Hilltoppers walk, trot, canter	
14	Snowflake Hunt Trail	1'0"
15	Rock-Around-the-Clock Musical Pairs	
16	Sit- A- Buck	
17	Bobbing For Apples	
18	Hobby Horse	2'0

* Subject To Change

Arena open for course walk 7:15 am
Riders Meeting 740 am
WU 4 starts at 8 am

<i>Sunday December 8, 2019</i>		
Class	Class Description	Fence Height
WU 4	Warm Up	2'9"
19	Tinsile Medal	2'9" , with USEF tests 1-19
20	Candy Cane Medal	3'3" , with USEF tests 1-19
21	14-17 Equitation	
22	11-13 Equitation	
23	18 & over Equitation	
WU 5	Warm Up	2'6"
24	Elf Medal	2'6" , with USEF tests 1-9
WU 6	Warm Up	2'0"
25	Jingle Bell Medal	2'0"
26	Peppy Polo Pony Derby	18"- 2'6"
27	Mr. & Mrs. Claus Hunt Trail	
28	Mistletoe Western Horsemanship	
29	Ranch Riding	
30	Western Pleasure	

* Subject To Change

Class Description

SATURDAY

Warm Up Classes: This is a 5-7 fence single round format. Warm up course will be posted. The WARM-UP CLASSES are open to all horses/ponies as an opportunity to school over the show jumps. These class is NOT judged, and open to all riders, Hunt coats are optional. WU-1: 2'9"- 3'0". WU-2: 2'6"- 2'9". WU-3: 18"-2'0" Riders have the option to have their trainer in the arena during their warm up round. WU-4; 2'9". WU-5: 2'6". WU-6: 2'0".

DANCER, VIXEN, PRANCER Derbies (Class 1,2,6): This is a two-round format utilizing the open numerical system to score competitors in the Classic Hunter Round (first round) on performance, hunter pace, jumping style, quality and substance, and movement. In addition, the base score in the Handy Hunter Round (second round) reflects brilliance of pace and handiness. In each round, after the judge's base score is given, one point will be added for each high-option fence jumped up to a maximum of four high option fences. The point must be added even if there is a refusal, rail down, or a loss of good jumping style at that fence, providing that the horse-and-rider combination does jump the higher height fence option. Obstacles are reminiscent of the hunt field and offer a variety of appearances, such as natural post and rail, stone wall, white board fence or gate, coop, aiken, hedge, oxer, brush, logs and/or natural foliage. The Handy Hunter Round should simulate riding over hunt country and incorporates options such as tight turns, clever options for jump approaches, hand galloping, trotting a fence, and crossing a bridge.

SCORING: *The judge will determine the base score for the Classic Round, 1 point for each high option fence will be added to the base score. Horses scoring 60 or above in the first round are eligible for the Handy Round.

*The judge will determine the score for the handy round. With 1 point added for each high option fences, as well as handy points awarded for handiness throughout the course for a Total Handy Score. Total Handy Score will be added to the Classic Score for the *Total Final Score* to determine placings in each derby.

COMET DERBY, RUDOLPH DERBY (Class 7 & 10): These Derbies will be held over a single-round course of 10 fences at Comet- 2'3" in height, with 4 option fences set at 2'6", Rudolph- 18" in height, with two option fences set at 2'. Simple changes of lead will not be penalized. Obstacles are reminiscent of the hunt field and should offer a variety of appearances, such as natural post and rail, stone wall, white board fence or gate, coop, aiken, hedge, oxer, brush, logs and natural foliage. The course will consist of Hunter Classic and Hunter Handy style lines, turns and jumps and include hand galloping and/or trotting a fence. The Judge will use the open numerical scoring system. After the Judge's score is given, one point will be added for each high option fence jumped.

Fence heights for the Reindeer Derbies:

<u>CLASS #</u>	<u>FENCE HEIGHT</u>
1	2'9" with 4 high option fences set at 3'0"
2	3'0" with 4 high option fences set at 3'3"
3	3'3" with 2 high option fences set at 3'6" & 2 high option fences set at 3'9"
6	2'6" with 4 high option fences set at 2'9"
7	2'3" with 2 high option fences set at 2'6"
10	18" with 2 high options set at 2'0" **

*Riders may cross enter between derbies with different fence heights, but for junior and amateur riders who enter in multiple derbies, the derby with lower fence heights will be judged and pinned in the Open section.

** Horse and riders entered in class# 3, the Bucky Reynolds Memorial Cupid Hunter Derby Classic, maybe be judged in an Under Saddle phase as well as the Classic and Handy Hunter rounds.

** For Class #10 ONLY, Fences may be taken at the trot or canter. Except for refusals, jumping faults of the horse are not considered unless they are the fault of the rider.

*** Simple changes of lead will NOT be penalized for derbies with fence heights 2'3" and below.

** JUNIORS, ADULTS, & OPEN SECTIONS WILL BE JUDGED & PINNED SEPARATELY FOR EACH DERBY CLASS, EXCLUDING CLASS #3, The Bucky Reynolds Memorial Cupid Derby Classic will be open to Juniors, Amateurs & Open riders. All sections (Pro, Open & Am) judged collectively. See below for class description.

***Bucky Reynolds Memorial Cupid Derby Classic:** This hunter derby will include a Hack, Classic, and a Handy round. To be judged as other derbies, though high option fences in the Handy round will be worth 2 points each high-option fence jumped, with up to a maximum of four high option fences. Points from all three phases will be totaled to determine class placings. A perpetual award in honor of "Bucky" will be awarded to the winning horse. Open to Juniors, Adult Amateurs, and professional riders. Judged and pinned collectively. If less than 3 riders are entered, only the classic round will be held.

HUNT PAIRS HUNTER CHALLENGE \$100 STAKE: *RIDERS ENTER INDIVIDUALLY ON ENTRY FORM.* Open to Horses and ponies. To be ridden over a derby style course in tandem except for the last fence, which shall be taken abreast. At the end of each round, the Judge asks the pair a question pertaining to the Hunter Division. Performance, way of going as a team, 75%; quality, substance, soundness and resemblance as a team, 15%; Correctly answered question, 10%. Prize money split to each member of winning pair, and ribbons to each pair member through 6th place. **Minimum of 3 pairs for stake money to be paid out.**

Sleigh Ride Under Saddle: Open to all riders, horses, and ponies. To be judged at the walk, trot, and canter both ways of the ring. Horses should be obedient, alert, responsive and move freely. They should not be eliminated for slight errors. Horses maybe asked to hand gallop collectively one way of the ring. No more than eight horses will be asked to gallop at one time.

Christmas Pleasure Horse: Open to all riders, horses and ponies. To be judged at the walk, trot and canter both ways of the ring. There is an emphasis on manners and ability to afford a pleasurable ride.

Holly Hilltoppers: Open to riders who are not entered in any jumping classes and have limited, if any experience competing over fences. Judged on performance, manners, way of going and suitability of mount to rider. Riders will be asked to walk, trot, canter each direction.

Lead Line: Open to beginner riders. Horses to be lead at the walk and trot in both directions. No cross entry with any other classes is allowed. Office/Venue fee not applicable.

Walk Trot Equitation: Open to novice riders who have NOT won more that 5 blue ribbons at a show. To be judged at the walk and trot both ways of the arena. Class will be judged on the rider's effectiveness and position on the flat. Cross entry with "Rudolph" derby (class #10) & games classes 14,15,16, &17 ONLY.

Snowflake Hunt Trail: Open to all horse & junior riders (Under 18) , from any discipline (Polo, Western, Dressage & Hunt tack). Riders will be tested over a trail course which may include riding over terrain at the walk trot and/ or canter crossing a bridge, checking a mailbox, option to jump a straw bale or step over a log. Class will be judged on riders effectiveness and position on the flat, 65%, ability to complete hunt trail course 35%.

Mr. & Ms's. Claus Hunt Trail: Open to all horse & adult riders (18 & over) , from any discipline (Polo, Western, Dressage & Hunt tack). Riders will be tested over a trail course which

may include riding over terrain at the walk, trot and/or canter, crossing a bridge, checking a mailbox, option to jump a straw bale or step over a log. Class will be judged on riders effectiveness and position on the flat, 65%, ability to complete hunt trail course 35%.

Rock-Around-the-Clock Musical Pairs: Riders will ride with their pair, when the class starts, the music will begin, when the music stops, riders must halt, dismount, switch horses, and remount before the music begins again. Riders who do not re-mount before the music start, are eliminated, the last pair left is the winner. Riders will be asked to walk trot & canter each direction. Office/Venue fee not applicable.

Sit- a- Buck: Competitors enter the arena with a dollar bill under each calf. Riders follow the judge's instructions. Riders not following the judge's instructions are eliminated. Riders losing both of their dollars are eliminated. The last remaining rider with at least one dollar held by their calf wins all the money. Office/ Venue fee not applicable.

Apple Bob: Starting at one end of the arena, riders trot to a bucket of water, dismount, and, while holding on to their horses, either horse or rider try to catch an apple that is floating in the water between their teeth. When (or if) they catch an apple, they mount the pony again and gallop back to the finish line with the apple in their mouth. First rider back to the finish line wins a bag of apples. If rider can't mount without assistance, they may lead their horses to the finish line. Office/ Venue fee not applicable.

Holiday Hobby Horse: "Hobby Horses" are optional. Class will be structured as a flat class, while judges may ask for "work-off" type tests on the flat and over fences. Fences will not exceed 2'0 . Office/Venue fee not applicable.

SUNDAY

Tinsel Medal: Open to Junior and Adult Amateur riders. Conducted like the USEF Hunter Seat Equitation Medal. USEF Tests 1-19 maybe asked, fence height 2'9". Riders maybe asked to work off. Riders may not cross enter in to any other medal.

Candy Cane Medal: Open to Junior and Adult Amateur riders. Conducted like the USEF Hunter Seat Equitation Medal. USEF Tests 1-19 maybe asked, fence height 3'3". Riders maybe asked to work off. Riders may not cross enter in to any other medal.

Elf Medal: Open to Junior and Adult Amateur riders. Conducted like the USEF Hunter Seat Equitation Medal. USEF Tests 1-9 maybe asked, fence height 2'6". Riders maybe asked to work off. Riders may not cross enter in to any other medal class.

Jingle Bell Medal: Open to Junior and Adult Amateur riders. fence height 2'0". Conducted like the USEF Hunter Seat Equitation Medal. Riders may not cross enter into any other medal class. Simple changes of lead will not be penalized.

11-13, 14-17 & Adult Equitation: To be judged at the walk, trot and canter both ways of the ring. Additional USEF/ USHJA tests may be requested at the judge's discretion.

Peppy Polo Pony Derby: Open to all horses and riders. Each round is timed, the first half of the course will be ridden as a gamblers choice, the first 5 jumps are chosen at the riders discretion. Fences will be set 1'6"-2'6", each jump will be worth a different amount of points (1'6"= 3 points, 2'0"=5 points, 2'3"=10 points, 2'6" =15 points) jumps maybe taken at the trot or canter. If a fence knocks down, 1 penalty point will be added. Once the jumping phase is complete riders will continue out to the grass field and must make 2 goal shots from specific marks on the field. Goal shots may be taken at the walk, trot or canter. Jumping points will be deducted from the total course time to determine the score, rider with the lowest score wins! Office/ Venue fee not applicable.

WESTERN

Mistletoe Western Horsemanship: Judged at the walk, jog and lope, both directions of the arena. Emphasis is placed on the horse and the rider working together. Execution of required gaits, transitions, tests, and correct form of both horse and rider, while maintaining a pleasurable ride, are the important factors. Riders maybe asked to perform a pattern. When performing the pattern in a Western Horsemanship class, riders should show complete control, precision, accuracy, and smoothness. Execution and correct form of both the horse and rider while maintaining a pleasurable ride are the main criteria for this class.

Ranch Riding: Judged on the horses ability to work at a forward, working speed while performing required and optional maneuvers over a posted Ranch Riding pattern. The ranch riding horse should simulate a horse riding outside the confines of an arena and reflect the versatility, attitude and movement of a working horse.

Western Pleasure: Judged at a walk, jog-trot and lope both ways of the ring on a reasonably loose rein without undue restraint. To be judged on performance, conformation, appointments.

REINDEER DERBY SPECIAL AWARDS

- * **Bucky Reynolds Memorial Award-** A perpetual trophy awarded to the highest scoring horse over the three phases in the in the Bucky Reynolds Memorial Cupid Derby Classic.
- * **Frank Madden Excellence In Equitation Award-** A perpetual equitation trophy will be awarded to the high point equitation rider. Riders may be asked to work off on the flat and tested.
- * **Horse Play Encouraged Award-** Awarded to the high point junior and adult rider for both days of the Reindeer Derby combined.
- * **Ride Of the Day** - Awarded to the hunter derby horse and rider with the highest combined classic and handy round score of the day.

Be A Sponsor!

Show your support ... Would you like to sponsor a Derby?

We are welcoming sponsors for ALL classes offered at the Reindeer Derby Day.

Sponsor options are listed below...

SPONSOR OPTION	DONATION
Reindeer Derby Sponsorship	\$50
Equitation Medal Sponsorship	\$50
Equitation on the Flat Sponsorships	\$20
Christmas Pleasure Horse Sponsorship	\$15
Mr & Miss's Claus Sponsorship	\$15
Lead line Sponsorship	\$5
Games Sponsorship	\$5

Other Ways To Support

Any gift to The Reindeer Derby 2019 makes a difference. We are grateful for community support and involvement as spectators, volunteers, sponsors, and vendors. Let's get together and create an Equestrian Event at the close of 2019, the 4th Annual North Shore Equestrian Derby!

This event is being made possible by volunteers who share their time and individuals who provide financial assistance through their generous donations. We are so grateful!

Entry Form- Reindeer Derby 2019

RIDER'S NAME: _____

HORSE'S NAME: _____

CLASS #'s entered: _____, _____, _____, _____, _____, _____, _____, _____, _____, _____, _____, _____, _____

HUNT PAIR CHALLENGE \$100 STAKE Team Member _____

S
A
T
U
R
D
A
Y

	WARM UP	#1 (2'9")	#2 (2'6")	#3a (2'3")	#3b (18")	\$15
1	DANCER DERBY	(O) OPEN	(A) ADULT	(J) JUNIOR		\$45
2	VIXEN DERBY	(O) OPEN	(A) ADULT	(J) JUNIOR		\$45
3	CUPID DERBY CLASSIC					\$50
4	SLEIGH RIDE UNDERSADDLE					\$20
5	CHRISTMAS PLEASURE HORSE					\$20
6	PRANCER DERBY	(O) OPEN	(A) ADULT	(J) JUNIOR		\$45
7	COMET DERBY	(O) OPEN	(A) ADULT	(J) JUNIOR		\$35
8	HUNT PAIRS \$100 STAKE					\$20 each rider
9	LEADLINE					\$10
10	RUDOLPH DERBY	(O) OPEN	(A) ADULT	(J) JUNIOR		\$35
11	10 & UNDER Flat Equitation					\$20
12	Walk- Trot Equitation					\$20
13	HOLLY HILLTOPPERS					\$20
14	Snowflake Hunt Trail					\$20
15	Rock-Around-the- Clock Pairs					\$5
16	SIT - A - BUCK					\$5
17	BOBBING FOR APPLES					\$5
18	HOBBY HORSE					\$5

S
U
N
D
A
Y

	WARM UP	#4 (2'9")	#5 (2'6")	#6 (2'0")		\$15
19	TINSILE MEDAL		(A) ADULT	(J) JUNIOR		\$35
20	CANDY CANE MEDAL		(A) ADULT	(J) JUNIOR		\$35
21	14-17 FLAT EQ					\$20
22	11-13 FLAT EQ					\$20
23	18 & over.FLAT EQ					\$20
24	ELF MEDAL		(A) ADULT	(J) JUNIOR		\$35
25	JINGLE BELL MEDAL		(A) ADULT	(J) JUNIOR		\$35
26	Peppy Polo Pony Derby					\$25
27	Mr. & Mrs. Claus Hunt Trail					\$20
28	Mistletoe Western Horsemanship					\$20
29	Ranch Riding					\$20
30	Western Pleasure					\$20
	CLASS TOTAL					
	OFFICE/ VENUE FEE					\$50
	POST ENTRY Does not apply to Games, Applied when registering on or after December 6	\$10/ class	(X # of classes)			
	TOTAL					
	Early Bird Discount if entry is received by November 9, 2019	-10%				
	DONATION					
	Premier Parking Pass (Optional) For parking section A , see below.					\$5
	TOTAL					

* NOTE: Office/ Venue fee applicable 1 time / rider

PLEASE MAKE CHECKS PAYABLE TO: THE REINDEER DERBY
MAIL TO: MICHELLE COLTE 95-1027 KAHAKIKI STREET MILILANI, HAWAII 96789

I hereby relinquish all claims against Dillingham Ranch, The Reindeer Derby, Amy Quinlan, Amy Quinlan Equestrian, their management and employees, and show management, for injury to rider, loss, damage to horses or equipment or liabilities of any character. I agree to abide by rules set forth by this horse show committee.

Rider Info:

Name: _____

Age: _____ Birthdate (If minor): _____

Address: _____

Phone: _____

Signature: _____

Parent/Guardian _____

Signature (If Under 18) _____

Trainers Signature: _____

Horse Owner Info:

Name: _____

Address: _____

Phone: _____

Signature: _____

Name of HORSE: _____

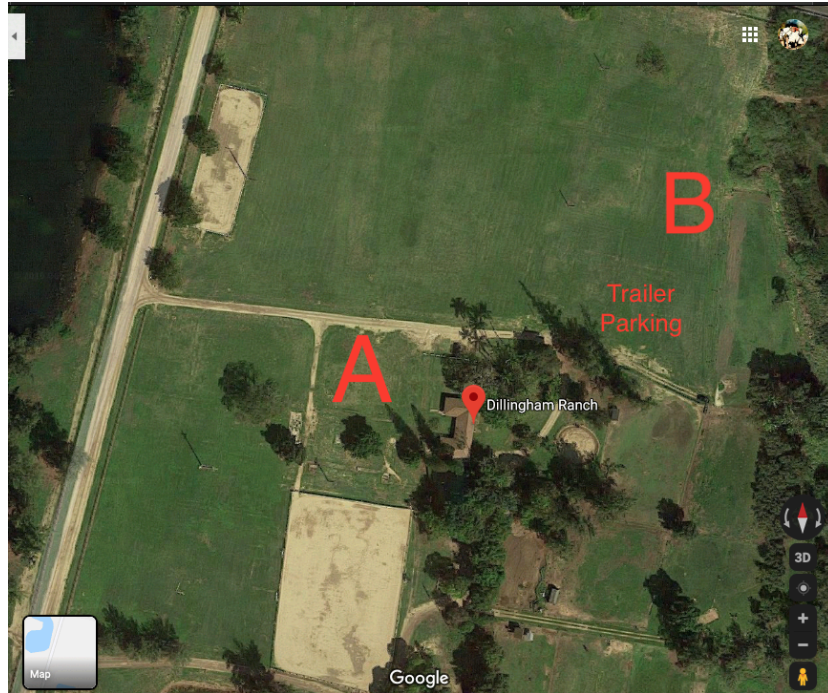
age _____

height _____

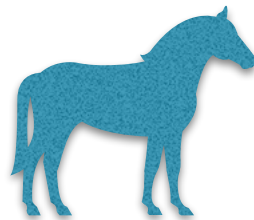
sex _____

DILLINGHAM
—1897—
RANCH
NORTH SHORE, OAHU

REINDEER DERBY PARKING



Premier on-site parking in parking section A is available for purchase for \$5 which includes both days of the Reindeer Derby. If you choose to purchase a parking pass, please print this pass and bring it to the secretary booth for validation to display on your dash board on the days of the event. Additional free on-site parking in parking section B will be available for all spectators and competitors. See map above.



Reindeer Derby Premier Parking Pass

License No: _____

Permission to Use Photograph Subject: Reindeer Derby 2019

Location: Dillingham Ranch, 68-540 Farrington Hwy Waiialua, HI 96791

I grant to The Reindeer Derby, its representatives and employees the right to take photographs of me and my property in connection with the above-identified subject. I authorize The Reindeer Derby, its assigns and transferees to copyright, use and publish the same in print and/or electronically.

I agree that The Reindeer Derby may use such photographs of me with or without my name and for any lawful purpose, including for example such purposes as publicity, illustration, advertising, and Web content.

I have read and understand the above:

Signature _____

Printed name _____

Organization Name (if applicable) _____

Address _____

Date _____

Signature, parent or guardian _____ (if under age 18)

**THE REINDEER DERBY
GENERAL ACTIVITY RELEASE, ASSUMPTION OF RISK, WAIVER OF
LIABILITY, AND INDEMNITY AGREEMENT**

This document waives important legal rights. Read it carefully before signing.

I **AGREE** for myself, and/or my child, my/our administrators and assigns, in consideration for my, and/or my child's, participation in this The Reindeer Derby and The Reindeer Derby activity to the following:

I **AGREE** that I choose to participate voluntarily in The Reindeer Derby and activity, as a rider, driver, handler, lessee, owner, agent, spectator, volunteer, and/or trainer. I am fully aware and acknowledge that horse sports and The Reindeer Derby activities involve inherent dangerous risks of accident, loss, and serious bodily injury including, but not limited to, broken bones, head injuries, trauma, pain, suffering or death ("Harm"). I fully understand that this release covers, but is not limited to, inherent risks of an equine activity which mean a danger or condition that is an integral part of an equine activity, including but not limited to, any of the following:

- The propensity of an equine to behave in ways that may result in injury, death, or loss to persons on or around the equine;
- The unpredictability of an equine's reaction to sounds, sudden movement, unfamiliar objects, persons, or other animals;
- Hazards, including, but not limited to, surface or subsurface conditions;
- A collision with another equine, another animal, a person, or an object;
- The potential of an equine activity participant to act in a negligent manner that may contribute to injury, death, or loss to the person of the participant or to other persons, including but not limited to, failing to maintain control over an equine or failing to act within the ability of the participant.

I **AGREE** to release the The Reindeer Derby, its successors or assigns, officials, officers, directors, employees, agents, personnel, volunteers and affiliated organizations from all claims including, but not limited to, claims for money or property, disability, covenants, actions, suits, causes or action, obligations, debts, costs, expenses, attorneys' fees, judgments, orders and liabilities of whatsoever

kind or nature in law, equity or otherwise, whether now known or unknown, suspected or unsuspected, and whether concealed or hidden, including but not limited to any state or federal statutory or common law claim or remedy of any kind whatsoever arising out of or in any way connected with any Harm to me or my horse and for any Harm caused by me or my horse to others, even if the Harm resulted, directly or indirectly, from the negligence of the The Reindeer Derby or the The Reindeer Derby activity.

I **AGREE** to expressly assume all risks of Harm to me or my horse, including Harm resulting from the negligence of the The Reindeer Derby or the The Reindeer Derby activity, and **specifically agree to the applicable state statute/law regarding equine/farm animal activity liability and signed posting (if any), in any state in which I or my child participates in a The Reindeer Derby activity. A true copy for all state statutes in effect at the time of the execution of this agreement is attached hereto and incorporated herein by reference as if set out fully in the text of this document.**

I **AGREE** to indemnify (that is, to pay any losses, damages, or costs incurred by) the The Reindeer Derby and the The Reindeer Derby activity and to hold them harmless with respect to claims for Harm to me or my horse, and for claims made by others for any Harm caused by me or my horse in the The Reindeer Derby. The Reindeer Derby shall promptly notify you in writing of any claim or action brought against The Reindeer Derby or any of its local clubs or affiliated organization in respect of which indemnity may be sought against you, setting forth the particulars of such claim or action and you will assume the defense thereof, including the employment of counsel satisfactory to The Reindeer Derby and the payment of all expenses.

I **AGREE** that neither I, nor any one claiming through me, will hereafter bring, commence, prosecute or maintain, or cause or permit to be brought, commenced, prosecuted or maintained, any suit or action, either at law or in equity, in any court in the United States or in any state thereof, or elsewhere, against the The Reindeer Derby, its successors or assigns, for, on account of, arising out of, or in any way connected with any Harm to me or my horse, and that neither I, nor any one claiming through me, will enforce, prosecute, or recover upon, or attempt to enforce, prosecute, or recover upon, any claim or right of action whatsoever, which I, or any one claiming through me, may now have or hereafter assert, in any way connected with claims for Harm to me or my horse, and for claims made by others for any Harms caused by me or my horse at the The Reindeer Derby activity.

I **AGREE** this Agreement is the entire agreement of the parties, and supersedes all prior oral and written understandings and agreements. This Agreement may be modified only by a written amendment signed by both parties.

I **AGREE** that if any provision of the Agreement is found to be invalid or illegal by a court of competent jurisdiction, the remaining provisions shall be construed as if the affected provision had not been included in order to effectuate the intent of the parties.

In the event this form is signed by the parent/guardian of a child, then all representations and acknowledgements herein are expressly made by, for, and on behalf of the parent/guardian and child.

By signing below, I **AGREE** to be bound by all applicable The Reindeer Derby rules and all terms and provisions of the The Reindeer Derby activity. I acknowledge that I enter into this release after having read the same, and place my signature hereto of my own free voluntary act and deed. By signing below, I represent to the The Reindeer Derby that I fully understand its contents, that I do not need any further explanation, and I waive any further explanation.

REQUIRED— all signatures must be originals, not photocopies.

_____ and

**Original Signature of Participant Date Original Signature of Parent(s) or Legal
Guardian(s) Date**

Unless participant is over the age of majority, i.e., dependent



**COMPLETE RELEASE OF ALL LIABILITY, WAIVER
AND AGREEMENT TO HOLD HARMLESS AND INDEMNIFY**

I understand that the purpose of this Complete Release of All Liability, Waiver and Agreement to Hold Harmless and indemnify (the "Agreement") is to give all persons and entities connected with the Dillingham Ranch Aina, LLC property located at 68-540 Farrington Highway, Waialua, Hawaii 96791 ("Dillingham Ranch") a complete release of any legal responsibility and liability to me and my children for any harm, injury, loss or damage we may suffer at Dillingham Ranch. By signing the Agreement, I intend to, and do hereby, give a complete release for any negligence, gross negligence, carelessness, recklessness and other fault of Kennedy Wilson International its officers, directors, employees and agents (collectively "Owner"), and all persons connected with Dillingham Ranch. By signing the Agreement, I have made a conscious decision for myself and my minor children to assume sole and absolute responsibility for any and all risk of injury and even death to me and/or my minor children in order to enter and be upon Dillingham Ranch, and to use or make use of any equipment, structure and livestock thereon. As used herein, the terms "I", "me", "myself" and "my" shall include myself and my minor children.

I HEREBY EXPRESSLY ASSUME ANY AND ALL RISK OF HARM, INJURY, LOSS AND DAMAGE TO MYSELF AND MY MINOR CHILDREN ASSOCIATED WITH OUR PRESENCE UPON AND USE OF DILLINGHAM RANCH. I FULLY UNDERSTAND ACKNOWLEDGE THAT DILLINGHAM RANCH IS A WORKING CATTLE RANCH AND CAN BE A DANGEROUS PLACE. I UNDERSTAND THAT THE RANCH PROPERTY ITSELF MAY BE DANGEROUS AND THAT STRUCTURES AND EQUIPMENT ON THE PROPERTY MAY BE DANGEROUS. I FURTHER UNDERSTAND THAT MANY ACTIVITIES AT DILLINGHAM RANCH MAY ALSO BE DANGEROUS AND THAT THE INFORMATION, INSTRUCTIONS AND EQUIPMENT PROVIDED TO ME AT DILLINGHAM RANCH MIGHT ALSO BE DEFECTIVE AND DANGEROUS.

Specifically, I understand, acknowledge, recognize and accept the fact that my presence on the Dillingham Ranch and my activities while there (the "Activities") may be dangerous and unattended by anyone. I further understand, acknowledge, recognize and accept that there are various and sundry risks associated with all activities at Dillingham Ranch. Such risk include, without limitation, the following: horses and other domestic animals can be unpredictable and may kick, buck, fall, bite, rear up, etc.; trails may become slippery and/or obstructed; outdoor exposure may cause sunburn, sunstroke, heat exhaustion, heatstroke, etc; there may be falling rocks/boulders, rockslides, mudslides, flash floods or other dangerous conditions; wild or feral animals may be encountered and can be dangerous and unpredictable; hunting firearms can be accidentally discharged; other recreational users may pose separate risks or danger. Possible injuries covered by this Agreement, without limitation, include bodily abrasions, contusions, broken bones, neck and back injuries, spinal injuries, head injuries, blindness, paralysis, loss or impairment of arms and legs, death and all other injuries.

WITH THIS KNOWLEDGE, UNDERSTANDING AND INTENT AND IN CONSIDERATION OF BEING ALLOWED ON THE DILLINGHAM RANCH, I DO, FOR MYSELF, MY MINOR CHILDREN AND FOR MY SUCCESSORS, ASSIGNS, REPRESENTATIVES, ADMINISTRATORS, INSURERS, OFFICERS, DIRECTORS, SHAREHOLDERS, PARTNERS, AFFILIATES, AGENTS, EMPLOYEES, CONTRACTORS, GUESTS, INVITEES, LICENSEES AND ATTORNEYS AND ANY OTHER PARTY CLAIMING BY, THROUGH OR UNDER ME (HEREINAFTER COLLECTIVELY CALLED "MY AFFILIATES"), DO HEREBY FULLY AND FINALLY FOREVER RELEASE, HOLD HARMLESS, WAIVE CLAIMS AGAINST, ACQUIT AND FOREVER DISCHARGE PROPERTY MANAGER, OWNER AND ALL OF THEIR RESPECTIVE SUCCESSORS, ASSIGNS, REPRESENTATIVES, ADMINISTRATORS, INSURERS, OFFICERS, DIRECTORS, SHAREHOLDERS, PARTNER, AFFILIATES, AGENTS, EMPLOYEES, CONTRACTORS AND ATTORNEYS (HEREIN AFTER COLLECTIVELY CALLED THE "DILLINGHAM AFFILIATES") FROM AND AGAINST ANY AND ALL LOSS LIABILITY EXPENSE, CLAIM OR DEMAND FOR ANY DAMAGE OR INJURY WHICH I, MY MINOR CHILDREN AND/OR MY AFFILIATES NOT HAVE, HAVE EVER HAD OR MY HAVE, WHETHER KNOWN OR UNKNOWN AS OF THE DATE HEREOF, AGAINST PROPERTY MANAGER, OWNER AND THE DILLINGHAM AFFILIATES RESULTING FROM OR ARISING OUT OF OR IN CONNECTION WITH, DIRECTLY OR IN DIRECTLY, MY PRESENCE ON THE ACTIVITIES AND/OR THOSE OF ANY OTHER PARTY CLAIMING BY, THROUGH OR UNDER ME, ON OR ABOUT THE DILLINGHAM RANCH AND THE PROPERTY.

In consideration of being allowed entrance upon the Dillingham Ranch and the use of the property, grounds, equipment, structures and livestock, I agree to and so hereby indemnify, defend and hold Property Manager, Owner and Dillingham Affiliates completely and fully harmless from and against any and all claims or demands for loss, expense or damage, including, without limitation, property damage, business interruption, economic loss and personal injury and death, arising out of or in connection with, directly or indirectly, my Activities and/or those of any other party claiming by, through or under me, on or about the Dillingham Ranch. I further agree to and do hereby also indemnify, defend and hold Property Manager, Owner and the Dillingham Affiliates completely and fully harmless from and against any and all loss, liabilities, costs, damages and expenses, including, without limitation, all attorney's fees and costs incurred by Property Manager, Owner and the Dillingham Affiliates, arising out of or in connection with any claims, actions or demands, threatened or actual, against Property Manager, Owner and the Dillingham Affiliates relating to, directly or in directly, my presence, the Activities and/or those of any other party claiming by, through or under me, on or about the Dillingham Ranch.

I ACKNOWLEDGE AND AGREE THAT PROPERTY MANAGER, OWNER AND THE DILLINGHAM AFFILIATES SHALL NOT BE LIABLE OR RESPONSIBLE IN ANY WAY FOR BELONGING TO ME OR MY AFFILIATES. NEITHER SHALL PROPERTY MANAGER NOR OWNER NOR THE DILLINGHAM AFFILIATES BE LIABLE FOR DAMAGES FOR INJURIES OR DEATH SUFFERED BY ME, MY MINOR CHILDREN OR MY AFFILIATES WHILE PARTICIPATING IN THE ACTIVITIES OR WHILE ON OR ABOUT THE DILLINGHAM RANCH. I ALSO ACKNOWLEDGE AND AGREE THAT I HAVE BEEN ADVISED THAT HAWAII REVISED STATUTES CHAPTER 520 LIMITS LANDOWNER LIABILITY TOWARD PERSONS ENTERING PRIVATE PROPERTY FOR RECREATIONAL PURPOSES.

I agree not to operate any motor vehicles over any portion of Dillingham Ranch outside of the equestrian area, and agree to operate any such motor vehicle only on those portions within the equestrian area that have been improved as a roadway.

I shall, at all times while I am on the Dillingham Ranch, observe and perform all laws, ordinances, rules and regulations now or hereafter made by Property Manager, Owner and/or Dillingham Affiliates and/or by any governmental authority applicable to Dillingham Ranch or any improvements thereon or use thereof, and agree to and do hereby indemnify, defend and hold Property Manager, Owner and the Dillingham Affiliates harmless from and against any and all claims, demands, losses, damages, costs and expenses, including reasonable attorney's fees, arising by reason of the nonobservance or nonperformance of said laws, ordinances, rules and regulations. I shall also comply with any directions given by on-site personnel of Dillingham Ranch.

I acknowledge that no other promises or agreements or representations of fact or opinion have been made to me in order to persuade me to sign this Agreement and that I have signed the Agreement freely, voluntarily, without coercion, not under duress and with full knowledge that I am giving up all my rights to make claims against and damage I may suffer at, on or about Dillingham Ranch and I am willing to assume all risks at, on or about Dillingham Ranch in connection with the Activities.

Neither the failure nor any delay on the part of a party to exercise any right, remedy, power or privilege under this Agreement shall operate as a waiver thereof, nor shall any single or partial exercise thereof preclude any other or further exercise of the same or any other right, remedy, power or privilege, nor shall any waiver of any right, remedy, power or privilege with respect to any occurrence be construed as a waiver thereof with respect to any other occurrence.

I expressly agree that being allowed to come on the Dillingham Ranch is sufficient consideration for this Agreement. I accept Dillingham Ranch in "AS IS", "WHERE IS" and "WITH ALL FAULTS" condition and I acknowledge that Property Manager, Owner and the Dillingham Affiliates have not made any representation or warranty as to the present or future suitability of Dillingham Ranch for any specific purpose.

I HAVE BEEN ADVISED NOT TO SIGN THIS DOCUMENT UNLESS I FULLY AND CLEARLY UNDERSTAND ITS CONTENTS. I DO UNDERSTAND THE CONTENTS HEREOF AND WILLINGLY PROCEED TO SIGN THE DOCUMENT AND AGREE TO ITS TERMS.

I UNDERSTAND AND AGREE THAT BY SIGNING THIS AGREEMENT I AM RELEASING, WAIVING, SURRENDERING, AGREEING TO FOREGO AND GIVING UP ALL OF MY RIGHTS TO MAKE A CLAIM AGAINST AND/OR TO FILE SUITE AGAINST THE PROPERTY MANAGER, OWNER AND DILLINGHAM AFFILIATES FOR ANY INJURIES OR DAMAGES TO ME OR MY MINOR CHILDREN SUSTAINED AT DILLINGHAM RANCH. I UNDERSTAND THAT BY SIGNING THIS AGREEMENT, I AM GIVING UP IMPORTANT LEGAL RIGHTS AND CLAIMS NOW AND FOREVER. I ALSO HEREBY STIPULATED AND AGREE THAT THE PROPERTY MANAGER, OWNER AND DILLINGHAM AFFILIATES SHALL BE AWARDED SUMMARY JUDGEMENT AS A MATTER OF LAW AGAINST ME AND MY AFFILIATES IN THE EVENT I MAKE A CLAIM IN VIOLATION OF THIS AGREEMENT AND THAT I WILL PAY THE COSTS AND ATTORNEYS' FEES FOR ANY SUCH PERSON OR ENTITY.

Name (Please print) _____

Signature
Parent or Legal Guardian

Date _____

Names of all minor children using this facility that I am legally responsible for:

1. _____
2. _____
3. _____
4. _____

(For the names of additional minor children of mine, see the attached sheet of paper)

This section to be completed by Hosting Boarder, Lesson Instructor, Staff, or Contracted staff:

Name of Host (Please Print): _____

Host Signature: _____ Date: _____

Reason for Visitor Entry (Circle one): Lesson/ Instruction Contracted Work Family/Guest
 Venue Participation Wedding/Photoshoot/Production Guest Rider

Other (please explain): _____

Will this visitor be a recurring guest? YES / NO

Please provide license plate number(s) for guest vehicles (if any): _____

REINDEER DERBY FOOD TRUCKS!



THE TRAVELING FOODIE

Saturday: 7:30 am~

Sunday: 7am~

FLYING AHI

Saturday 12pm-6pm



LICKITY SPLIT ICE

CREAM

Friday, Saturday, Sunday!!



Come for the weekend!! ...

Stabling Application Form for Dillingham Ranch
To make a reservation, complete this form and send it directly to:

Amy Quinlan
PO Box 806
Waialua, Hawaii
96791

Checks Payable to: The Reindeer Derby

Overnight Stabling: \$65 Friday-Sunday

Food, bedding and containers will not be provided

Payment is due with your reservation payable to The Reindeer Derby.

Stabling will be confirmed on a first come first serve basis and received by
November 16, 2019.

Day Stalls will be available once all overnight requests are filled. Day Stalls: \$25/ day.

Please indicate the days you are planning to stay:

Emergency Information

Owner/ Handler Name: _____

Phone/Cellular: _____

Address: _____

Horse: _____ Veterinarian: _____

In case of an emergency contact name/phone): _____

In the event of an emergency, if I, or my emergency contact cannot be reached I authorize Amy Quinlan to contact my Veterinarian.

I hereby relinquish all claims against Dillingham Ranch, Amy Quinlan, their management and employees, and show management, for injury to rider, loss, damage to horses or equipment or liabilities of any character. I agree to abide by rules set forth by this horse show committee.

Signature: _____ Date: _____

John French Clinic

December 9th & 10th 2019

Dillingham Ranch, Mokuleia, Hawaii



John French will be available for clinics
Monday Dec 9, 2019
Tuesday Dec 10, 2019

Private & group clinics available at various
locations available

*Please contact for pricing

Clinic Registration and 50% deposit due to
reserve your space.

Deadline : November 16, 2019

Please Contact Amy Quinlan,

quinlan_amy@yahoo.com for more details

Don't miss this opportunity to work with one
of our countries top hunter riders and
trainers.





OPERATION TOYBOX

Proud to present, the Reindeer Derby's partnership with the North Shore News & Hawaii Polo, Once a Month Church, & North Shore Foodbank to Help make a child's Christmas special

Please bring new, unwrapped toys and gifts for the homeless and disadvantaged keiki and teens of Hawaii. Toy drop off will be at the show secretary booth on both days of the Reindeer Derby.

